

Prison and Probation
Service of Finland
Statistical Yearbook
2024



R/SE

PRISON AND PROBATION SERVICE
FINLAND

Statistical Yearbook 2024



Prison and Probation Service of Finland

Opastinsilta 12 C, 00520 Helsinki

Tel. +358 29 56 88500

kirjaamo.rise@om.fi

The Statistical Yearbook of the Prison and Probation Service of Finland is published annually in Finnish, Swedish and English

www.rikosseuraamus.fi/en

ISSN 2736-8432 (Online publication)

Contents

| | |
|---|-----------|
| Terminology | 4 |
| List of tables | 7 |
| Prison services | 7 |
| Probation services | 8 |
| List of figures | 8 |
| Preface | 9 |
| 1 Sanctions | 10 |
| 1.1 Enforcement of sentences | 10 |
| 1.2 Overview of the development of the penal system | 10 |
| 2 Prison services | 12 |
| 2.1 Development of prison population | 12 |
| 2.2 Prison population structure | 13 |
| 2.3 Order and safety | 15 |
| 2.4 Prisoner activities | 16 |
| 2.5 Recidivism among released sentenced prisoners | 17 |
| 3 Probation services | 18 |
| 3.1 Number of persons sentenced to community sanctions | 18 |
| 3.2 Background information on persons sentenced to community sanctions | 20 |
| 3.3 Social situation of people sentenced to community sanctions | 23 |
| Tables: Prison services | 24 |
| Tables: Probation services | 34 |

Terminology

Supervision of persons sentenced to conditional imprisonment (adults and young persons)

A person may be subjected to supervision for 15 months in order to reinforce conditional imprisonment. Supervision is imposed if it is considered to promote the social adaptation of the offender and to prevent further offences. If a sentenced person aged 21 or over upon committing an offence seriously breaches the obligations that are part of the supervision, the supervision period may be extended or the unserved part of the supervision period may be converted into short unconditional imprisonment.

Supervision of parolees

Almost without an exception only a specific proportion of a prison sentence is served in prison. Parole (also known as conditional release) means the release of a prisoner sentenced to unconditional imprisonment so that he or she can serve the rest of the sentence in freedom. A prisoner released on parole is ordered to supervision if the probationary period is longer than one year, the offence was committed when under 21 years of age, or the prisoner so requests.

Length of time in prison

In this publication, the length of time served in prison is used in two different connections: it is used as cumulative data on prisoners released within one year and as cross-sectional data on prisoners in prisons on 1 May. The data differs from each other because the cumulative data emphasises short sentences and the cross-sectional data long sentences.

Juvenile punishment

Juvenile punishment can be sentenced for an offence committed under the age of 18 years if a fine is considered an insufficient sanction and there are no weighty reasons requiring unconditional imprisonment. A juvenile punishment may last from four to twelve months. Juvenile punishment consists of supervision appointments, guidance and support promoting coping in society and orientation to employment.

Fine default prisoner

A fine default prisoner is a person serving a conversion sentence for an unpaid fine. A conversion sentence, i.e. an unpaid fine converted into imprisonment, is imposed on a person who has been sentenced to a fine but the collection of the fine has failed.

House arrest

The court may impose a technically monitored house arrest on a person, who has been sentenced to unconditional imprisonment, as an alternative to remand imprisonment if the sentence is less than two years of imprisonment. Remand imprisonment means the time when a person suspected of an offence is remanded before the judgement becomes enforceable or final.

Remand prisoner

A remand prisoner is a person remanded due to a suspected offence. The court decides on remand. As a rule, a person remanded due to an offence must be taken, without a delay, to an institution approved by the Ministry of Justice to hold remand prisoners. The period of loss of liberty is deducted during the enforcement of the sentence.

Monitoring sentence

A monitoring sentence may be imposed instead of unconditional imprisonment of at most six months if there is an obstacle to sentencing to community service. Prior unconditional prison sentences and monitoring sentences or the nature of the offence may prevent the imposition of a monitoring sentence. Another precondition is that the monitoring sentence has to maintain and promote the social abilities of the accused person. A person serving a monitoring sentence can move outside his or her home only at times determined in the schedule. The use of intoxicating substances is prohibited for the whole duration of the sentence. The sentenced person is monitored with the help of both technical devices and surprise visits to his or her home.

Probationary liberty under supervision

Prisoners may be placed in probationary liberty under supervision outside the prison a maximum of six months before their conditional release. During probationary liberty, the person must comply with the obligation to stay at home or other determined placement and take part in activities, which are scheduled every week. The person is required to abstain from intoxicating substances. The compliance with the conditions of probationary liberty is monitored in many ways.

Sentenced prisoner

A sentenced prisoner is a prisoner who serves a sentence of unconditional fixed-term or life imprisonment.

Recidivism of sentenced prisoners

For the purposes of this statistical yearbook, a recidivist is defined as a person who after the release commits at least one new offence, which results in a final sentence of unconditional imprisonment or community service. The follow-up period starts at the date of release and ends with the date of commission of the first offence or the date of death. Foreign nationals are included in the data set if they have been issued with a Finnish personal identity code.

Combination sentence

A combination sentence consists of unconditional imprisonment and a one-year supervision term that follows the prison term. A combination sentence can be imposed on a person, who has committed a new serious offence and is deemed particularly dangerous to the life, health, or freedom of another. A person serving a combination sentence is not entitled to conditional release and probationary liberty under supervision. The main obligations of the supervised person include remaining at the place of residence at the set times, being sober at events related to the supervision term, and participating in rehabilitation or other activities. The commitment to the obligations is monitored by technical means, such as an ankle tag.

Community service

Community service may be sentenced instead of unconditional imprisonment of at most eight months. It mainly consists of unpaid non-profit work. The precondition is that the sentenced person is suitable for community service and consents to it. The Prison and Probation Service prepares a pre-sentence report and the court makes the final decision on community service. The length of community service varies from 14 to 240 hours.

Community service may also be imposed as an ancillary sanction to conditional imprisonment of over 12 months in which case it can last 20–90 hours.

List of tables

Prison services

| | |
|--|----|
| 1. Prisoners in prisons according to gender, prisoner group and prison type in 2024 | 24 |
| 2. Average daily number of prisoners according to prisoner group in 2015–2024 | 24 |
| 3. Average number of under 21-year-old remand and sentenced prisoners in 2015–2024 | 24 |
| 4. Persons arriving at prison from freedom according to prisoner group, gender and prison type in 2024 | 25 |
| 5. Persons arriving at prison from freedom according to prisoner group in 2015–2024 | 25 |
| 6. Released prisoners according to grounds for release, gender and prison type in 2024 | 25 |
| 7. Released sentenced prisoners according to served prison term, gender and prison type in 2024 | 26 |
| 8. Length of conversion sentences for unpaid fines completed in 2024 | 26 |
| 9. Released prisoners according to prisoner group and gender in 2015–2024 | 26 |
| 10. Length of time served in prison by released prisoners in 2015–2024 (%) | 27 |
| 11. Prisoners released on parole in 2015–2024 | 27 |
| 12. Number of life sentence prisoners at the beginning of the year and commenced life imprisonments, released life sentence prisoners and average length of the served sentence during the year in 2015–2025 | 27 |
| 13. Probationary liberty under supervision in 2015–2024 | 28 |
| 14. Principal offence of sentenced prisoners on 1 May in 2015–2024 (%) | 28 |
| 15. Age groups of sentenced prisoners on 1 May in 2015–2024 (%) | 29 |
| 16. Calculated length of time served in prison by sentenced prisoners on 1 May in 2015–2024 (%) | 29 |
| 17. Number of sentenced prisoners' previous prison sentences on 1 May in 2015–2024 (%) | 30 |
| 18. Average number of foreign prisoners according to prisoner group and their proportion of all prisoners in 2015–2024 | 30 |
| 19. Principal offence of foreign sentenced prisoners on 1 May in 2015–2024 (%) | 31 |
| 20. Nationalities of foreign prisoners on 1 May 2024 | 31 |
| 21. Prison leaves in 2015–2024 | 32 |
| 22. Escapes and unauthorised leaves in 2015–2024 | 32 |
| 23. Prisoners and prisons in 1985–2024 | 33 |
| 24. Recidivism of sentenced prisoners released in 2010–2019 (%) within a five-year follow-up period according to gender, age and previous prison sentences | 34 |

Probation services

| | |
|---|----|
| 25. Average daily number of persons sentenced to community sanctions in 2015–2024 | 34 |
| 26. Enforcement of community service in 2015–2024 | 35 |
| 27. Enforcement of monitoring sentence in 2015–2024 | 36 |
| 28. Supervision of persons sentenced to conditional imprisonment in 2015–2024 | 36 |
| 29. Enforcement of juvenile punishment in 2015–2024 | 37 |
| 30. Supervision of parolees in 2015–2024 | 37 |
| 31. Principal offence of persons sentenced to community sanctions according to sanction on 1 May in 2019–2024 (%) | 38 |
| 32. Age distribution of persons sentenced to community sanctions according to sanction on 1 May in 2015–2024 (%) | 39 |
| 33. Persons sentenced to community sanctions according to gender on 1 May in 2015–2024 (%) | 41 |
| 34. Socio-economic background of persons serving community service on 1 May in 2015–2024 (%) | 42 |
| 35. Socio-economic background of offenders serving monitoring sentence on 1 May in 2015–2024 (%) | 43 |
| 36. Socio-economic background of supervised persons sentenced to conditional imprisonment on 1 May in 2015–2024 (%) | 44 |
| 37. Socio-economic background of supervised parolees on 1 May in 2015–2024 (%) | 45 |

List of figures

| | |
|--|----|
| 1. Prisoners arriving from freedom, released prisoners and average number of prisoners per year in 2015–2024 | 12 |
| 2. Principal offence of sentenced prisoners on 1 May in 2015, 2018, 2021 and 2024 (%) | 13 |
| 3. Calculated length of time served in prison by sentenced prisoners on 1 May in 2015 and 2024 | 14 |
| 4. Average number of foreign sentenced and remand prisoners and their proportion of the average number of all prisoners in 2015–2024 | 15 |
| 5. Prison leaves in 2015–2024 | 16 |
| 6. Breakdown of prisoners' use of time on weekdays in 2024 | 17 |
| 7. Average daily number of persons sentenced to community sanctions in 2015–2024 | 19 |
| 8. Principal offence of persons sentenced to community sanctions on 1 May in 2015, 2018, 2021 and 2024 (%) | 21 |
| 9. Age distribution of persons sentenced to community sanctions on 1 May in 2015–2024 (%) | 22 |

Preface

The aim of this statistical publication is to provide a wide range of information about the Prison and Probation Service of Finland, i.e., the enforcement of prison sentences, community sanctions and remand imprisonment. Besides providing an overview of the prison and probation services, the publication also offers insight into the development of the field over the past decade.

The statistical data are based on the data systems used by the Prison and Probation Service. Due to a new offender management system adopted in 2022, some of the data are not comparable with the data from the previous years, and some time series have been discontinued.

The publication is mainly aimed at our own organisation, but it also answers the most common questions about persons serving prison sentences and community sanctions asked by individuals and organisations interested in the activities of the Prison and Probation Service.

All feedback on the publication is welcome. It can be sent by email to: tilastot.rise@om.fi.

1 Sanctions

1.1 Enforcement of sentences

The sentences enforced by the Prison and Probation Service are divided into prison sentences and community sanctions served in freedom. Community sanctions include the community service, monitoring sentence, supervision of persons sentenced to conditional imprisonment, juvenile punishment, supervision of parolees and supervision term of a combination sentence. The enforcement of community sanctions is carried out by the probation offices. Unconditional prison sentences and conversion sentences for unpaid fine are enforced by prisons. In addition, they are responsible for the implementation of remand imprisonment together with the police.

The basic units of the Prison and Probation Service are probation offices, open prisons and closed prisons. At the end of 2024, there were a total of 12 probation offices and 28 prisons in Finland. Approximately 67 per cent of the prisoner places are in closed prisons and 33 per cent in open prisons or open prison wards.

1.2 Overview of the development of the penal system

The enactment of the Imprisonment Act in 2006 marked a shift towards systematic and consistent enforcement. Provisions concerning parole (also known as conditional release) were also revised in connection with the Imprisonment Act and probationary liberty under supervision was introduced. A prisoner can be placed in probationary liberty under supervision a maximum of six months before regular release on parole.

The conversion of unpaid fines into imprisonment was scaled back on several occasions in the mid-2000s by, among other things, abolishing the possibility to convert fines imposed in the penal order proceedings into imprisonment in 2008. However, the use of conversion sentence for unpaid fines was expanded again in 2021. The seventh offence resulting in a fine of a person, who has committed similar offences repeatedly, will be heard at court, which may convert the fine into imprisonment if the person fails to pay the fine.

The Acts concerning the investigation of the circumstances of young offenders and the supervision of conditional imprisonment entered into force in 2011. Supervision became more binding as the number of supervision meetings was increased. The Act on Monitoring Sentence also entered into force in 2011.

The Act on Monitoring Sentence made it possible to serve an unconditional prison sentence of no more than six months long under electronic monitoring at one's own home or another location deemed suitable. A monitoring sentence can also include support measures to promote social adaptation.

The Community Sanctions Enforcement Act, which entered into force in 2015, replaced the separate acts on each community sanction. The new Act clarified the interrelation between the different community sanctions and unified the making of assessments and statements linked to the imposition, preparation, and enforcement of community sanctions. A possibility to use both open and institutional substance abuse treatment services was added to the enforcement of community sanctions. Community service sentenced for an offence committed under the age of 21 years can include activities and programmes that are specifically targeted at young people, aim to enhance their social functioning, and provide them with support and guidance. The minimum length of community service was changed to 14 hours and the maximum length to 240 hours so that they would better correspond to the number of days imposed as imprisonment.

At the beginning of 2018, a new combination sentence was introduced. It consists of unconditional imprisonment and a one-year supervision term. A combination sentence can be imposed on a person, who has committed a new serious offence and is deemed particularly dangerous to the life, health, or freedom of another. Only a small proportion of prisoners serves a combination sentence. The annual number of prisoners placed under supervision enhanced by electronic means after their release is low.

The transfer of remand prisoners from police custody facilities to prison has been quicker since the beginning of 2019. Remand prisoners may be kept in police custody facilities for a maximum of seven days unless there are very serious reasons for this. New technically monitored alternatives to remand imprisonment, i.e., intensified travel ban and house arrest were introduced at the beginning of 2019. The intensified travel ban is enforced by the police and the house arrest is enforced by the Prison and Probation Service. By the end of 2024, no cases of house arrests have been enforced.

The whole system of sanctions ancillary to conditional imprisonment was tightened at the beginning of 2020. As a result of the reform, an adult, in other words, a person who has committed an offence when aged 21 or over can also be placed under supervision in order to reinforce conditional imprisonment.

The tightening of legislation on sexual offences entered into force in 2019 and 2023, which led to a clear increase in the number of people sentenced for sexual offences.

2 Prison services

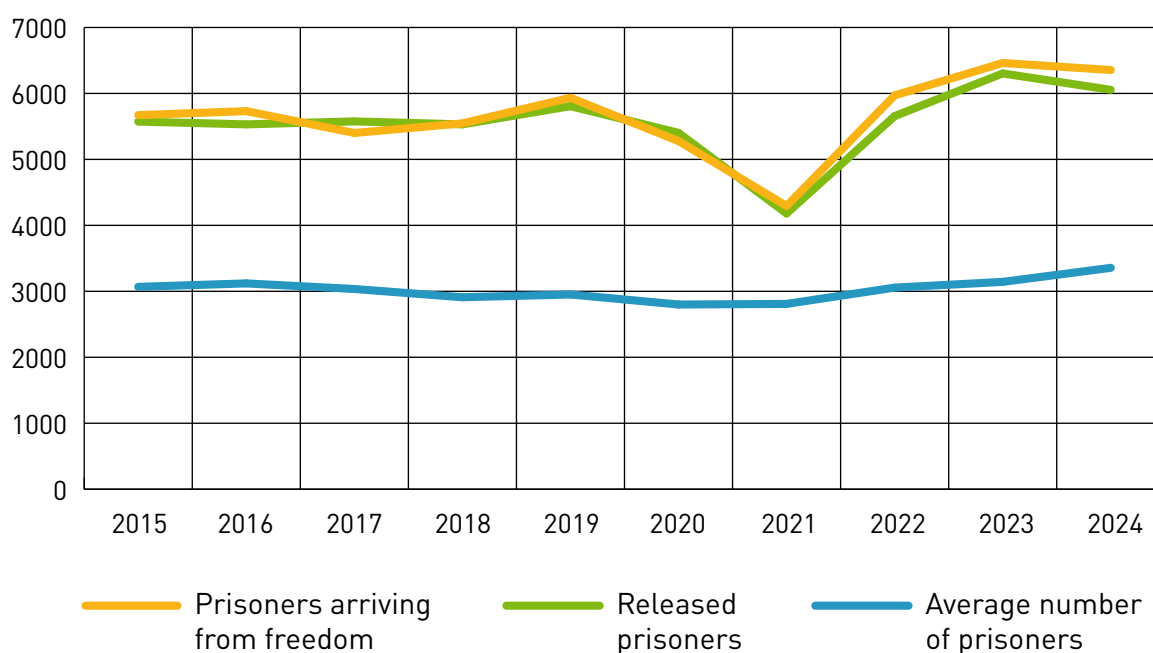
2.1 Development of prison population

The number of prisoners has increased over the past few years. In 2024, the average daily number of prisoners was 3 356, which was over 200 more than the year before (3 143). The figure includes 2 499 sentenced prisoners (2 341 in the previous year), 75 fine default prisoners (99) and 782 remand prisoners (703).

In 2024, a total of 6 355 prisoners were admitted to prison, which was about 100 fewer than a year earlier. The number of admitted remand prisoners was a record high (2 379), which was nearly 200 more than the year before. By contrast, the number of fine default prisoners (1 882) was significantly lower than in the previous year. The number of admitted sentenced prisoners (2 094) increased slightly.

The total number of prisoners released from prison in 2024 was 6 055 of whom 2 814 were sentenced prisoners, 1 773 fine default prisoners, and 1 468 remand prisoners. About 39 per cent of the sentenced prisoners had served at most three months of their sentence in prison and 13 per cent over two years. The average length of prison terms was 11.4 months. Approximately 51 per cent of all sentenced prisoners and 63 per cent of those, who had served more than two years of their sentence in prison, were released from open prisons.

Figure 1. Prisoners arriving from freedom, released prisoners and average number of prisoners per year in 2015–2024



In 2024, an average of 224 prisoners were in probationary liberty under supervision daily, which was slightly more in the previous year (206). There were 800 new placements in probationary liberty. The average length of probationary liberty was 109 days. Approximately 18 per cent of the placements in probationary liberty were cancelled mainly due to a breach of obligations.

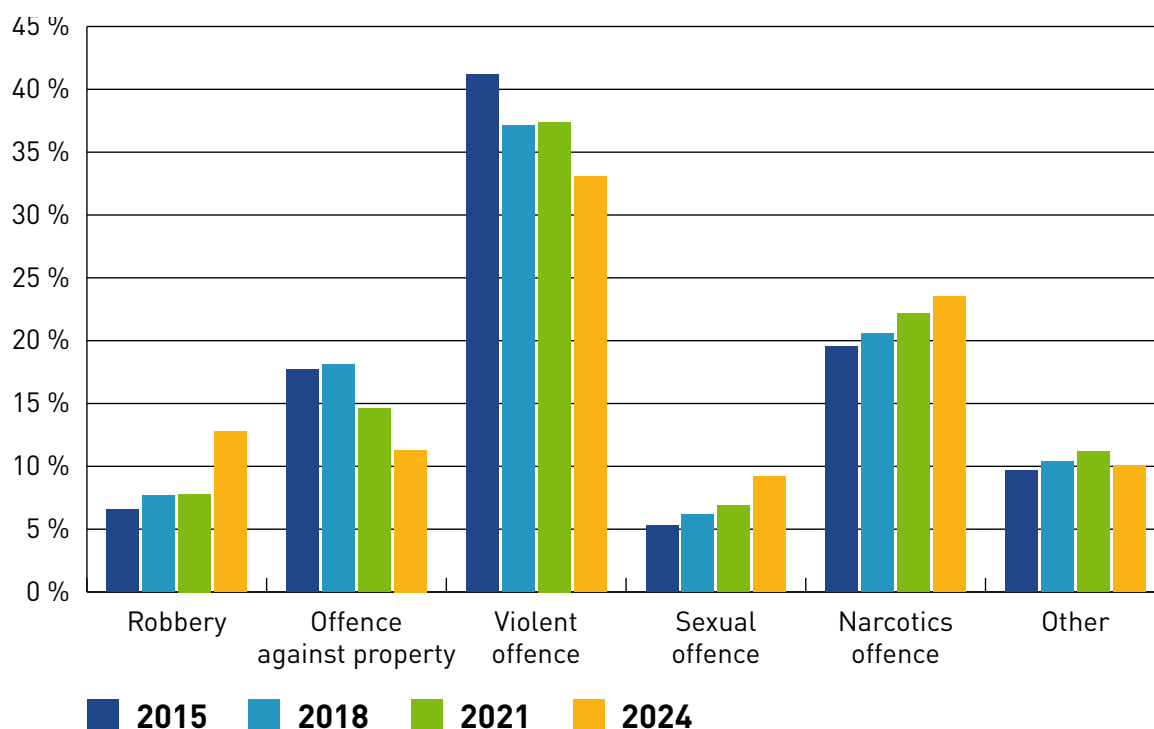
2.2 Prison population structure

The biggest prisoner group is persons sentenced for violent offences as their principal offence although their proportion has dropped since the early 2010s. In 2024, about 33 per cent of the prisoners were sentenced for violent offences, i.e., 20 per cent for homicide and 13 per cent for assault.

On average a fourth of all prisoners were sentenced for offences against property. The proportion of prisoners sentenced for robbery (13%) increased clearly compared with the previous years, whereas the proportion of those sentenced for theft (5%) decreased. The proportion of those sentenced for other offences against property was 6 per cent in 2024.

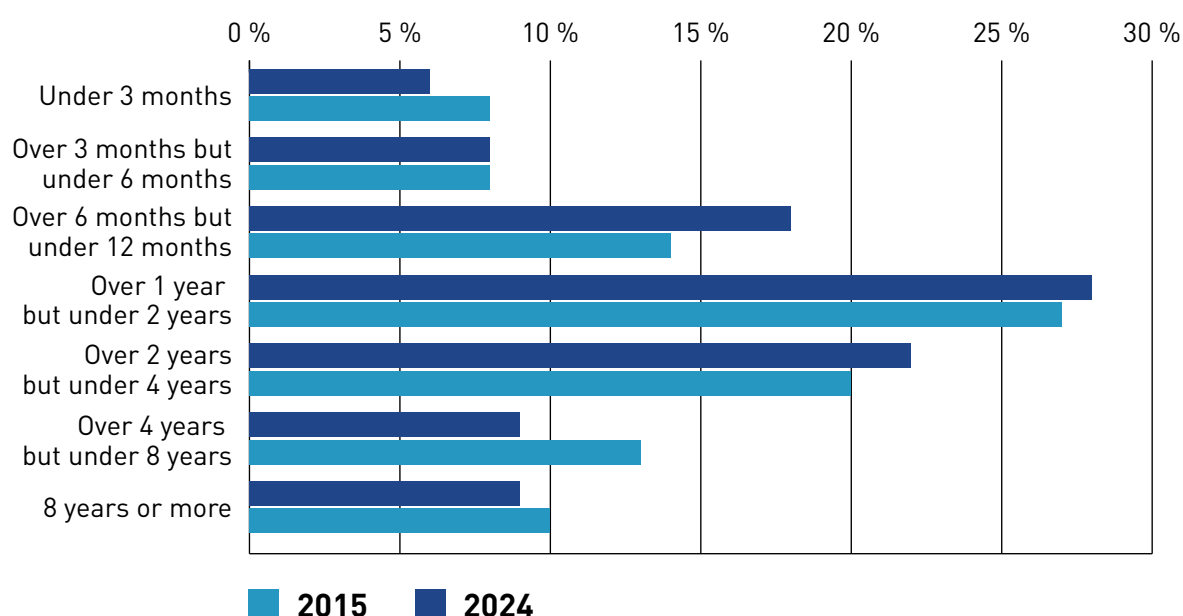
The number of offenders sentenced for narcotics offences is considerable and has increased over the past decade. In 2024, their proportion of all sentenced prisoners was 23 per cent, whereas ten years ago it was 19 per cent. Likewise, the proportion of offenders sentenced for sexual offences has risen steadily. In 2024, about 9 per cent of the prisoners were sentenced for sex offences.

Figure 2. Principal offence of sentenced prisoners on 1 May in 2015, 2018, 2021 and 2024 (%)



In a cross-sectional analysis of the prison population structure, the proportion of long-term prisoners has decreased over the past ten years. The biggest increase was in the proportion of prisoners serving six months but under one year, which was 18 per cent last year. Just under a third (28%) of the prisoners were estimated to be in prison for one to two years and about a fifth (22%) for two to four years. Approximately 9 per cent of the prisoners were looking to serve at least eight years in prison, while six per cent were looking to serve under three months.

Figure 3. Calculated length of time served in prison by sentenced prisoners on 1 May in 2015 and 2024



In 2024, the average age of all prisoners was 36.4 years. The average age of sentenced prisoners was 37.2 years and the average age of remand prisoners was 34.0 years. Approximately 10 per cent of sentenced prisoners were under 25 years old and 15 per cent were aged 50 or over. About 23 per cent of remand prisoners were under 25 years old.

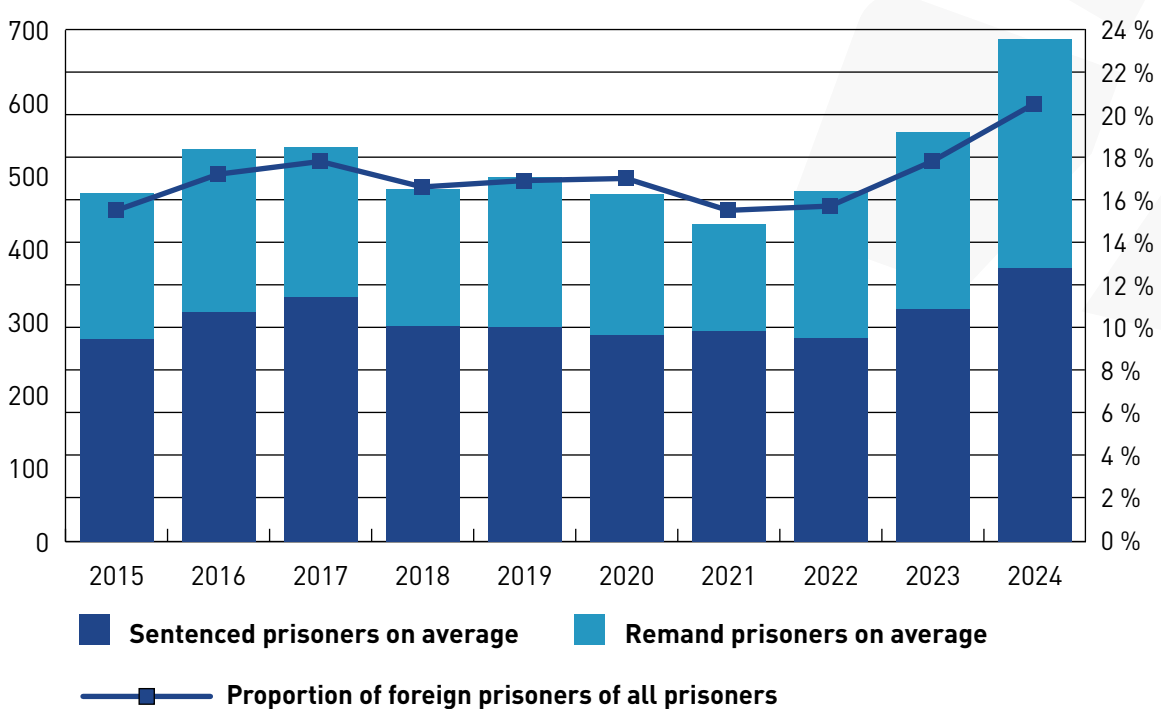
The proportion of first-time sentenced prisoners has risen from 37 to 46 per cent in the past ten years. In 2024, over a fourth of the sentenced prisoners (26%) were serving their third to seventh sentence and 15 per cent were in prison at least for the eighth time.

In 2024, there were on average 284 female prisoners, who made up about 8.5 per cent of all prisoners. The average age of sentenced female prisoners was 38.2 years. Almost half (45%) of them were sentenced for violent offences.

The number of foreign prisoners has increased over the past couple of years. In 2024, the average daily number of foreign prisoners reached an all-time high (687) with approximately 130 more than in the year before. Nearly half (46%) of foreign prisoners were remand prisoners.

According to the prisoner structure survey of 2024, 13 per cent of the foreign prisoners were Estonian, 10 per cent were Iraqis, and 7 per cent were Romanian. All in all, foreign prisoners represented 72 different nationalities. Half of foreign sentenced prisoners were convicted of narcotics offences (49%).

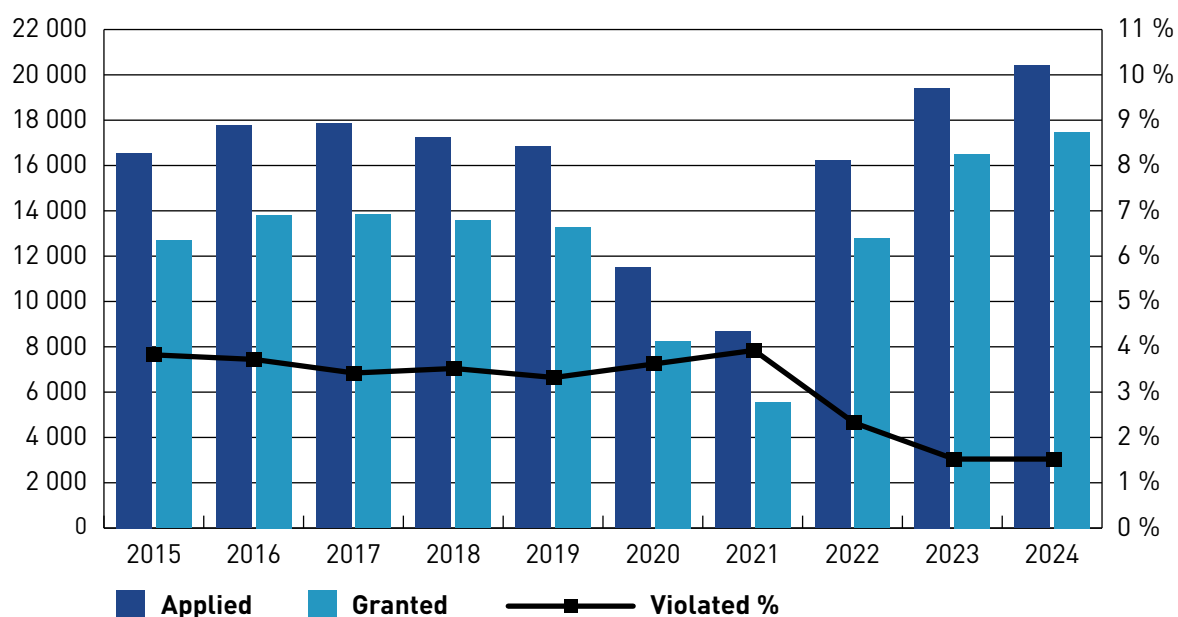
Figure 4. Average number of foreign sentenced and remand prisoners and their proportion of the average number of all prisoners in 2015–2024



2.3 Order and safety

In 2024, 86 per cent of a total of 20 410 submitted prison leave applications were granted, which was slightly more than the year before. The conditions of prison leave were breached on 246 occasions, which is equal to 1.5 per cent of all used prison leaves. The number of violations is not fully comparable to previous years due to differences between the previous and the new offender management system introduced in 2022.

Figure 5. Prison leaves in 2015–2024



The number of escapes has declined clearly over the past ten years. In 2024, there were under five escapes. Most of the escapes happen outside the prison walls, for example from job sites outside the gated areas or from prison officers or other authorities escorting prisoners. In 2024, no prisoners escaped from inside prison walls.

The cases of unauthorised leave from open prisons are not included in the statistics as escapes. Over the past ten years, the highest number of unauthorised leave cases was 75 in 2021. In 2024, there were 64 instances of prisoners leaving open prisons without authorisation.

2.4 Prisoner activities

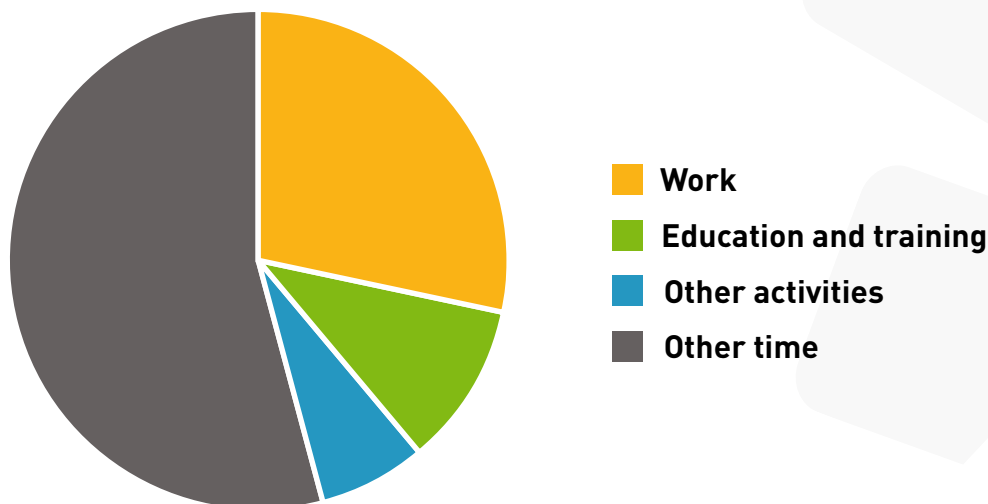
Prisoner activities consist of work, education, and other activities organised or approved by the prison. Different work activities, such as forestry work, environmental maintenance, building, cleaning or textile work, cover just under a third of the prisoners' use of time.

The education of prisoners is equivalent to that provided in the general education system. Education in the prisons is organised in cooperation with outside education institutions. Prisons offer preparatory training, general education (i.e., basic education and general upper secondary education) and vocational upper secondary education and training.

Prisoners may be granted permission to complete higher education studies as distance learning. In 2024, education formed 11 per cent of the prisoners' overall

use of time. The proportion of prisoners taking part in other activities, such as substance abuse rehabilitation programmes, programmes aimed to reduce recidivism, and other social rehabilitation programmes, was 7 per cent of the use of time. The proportion of prisoner activities of the weekly working hours was about 46 per cent. About 54 per cent of the weekly working hours was so-called passive time, such as sick leave, transfers, court appearances or prison leave.

Figure 6. Breakdown of prisoners' use of time on weekdays in 2024



2.5 Recidivism among released sentenced prisoners

Recidivism among released sentenced prisoners stayed steady during the period included in the statistics (prisoners released between 2009 and 2019). During a five-year follow-up period, 62 per cent of sentenced prisoners released in 2019 committed at least one offence resulting in a new sentence of unconditional prison sentence or community service. In comparison with the previous statistical year, recidivism increased slightly when analysed by gender, age and number of previous prison terms. The biggest change was in the recidivism of prisoners, who were 40–49 years old when released from prison (+7 percentage points).

During the past four statistical years, the recidivism rates were influenced by slower court processes and several statutory restrictions on the commencement of prison sentences due to the COVID-19 pandemic. The recidivism of female prisoners (51%) increased by six percentage points since the previous statistical year. Recidivism among prisoners, who had been released from prison the third, fourth or fifth time (67%) dropped by four percentage points compared with those released in 2018. In other categories of previous prison sentences, recidivism increased.

The key indicators of recidivism are criminal history and age: offenders, who have been in prison several times, are at high risk to reoffend and young offenders are more likely to return to prison than older ones.

3 Probation services

3.1 Number of persons sentenced to community sanctions

The average daily number of persons sentenced to community sanctions started to rise in 2019 after a downward trend that had lasted over ten years. Due to the introduction of the new offender management system in 2022, the method for calculating the number of persons sentenced to community sanctions was changed, making comparisons with previous years' averages impossible. The change in the calculation method is linked to differences in the structure of the old and new offender management systems and in the point of time when the processes of enforcement of community sanctions are considered to begin. According to the new definition, persons sentenced to community sanctions are either in the preparation phase of the enforcement process or in the enforcement phase serving their sentence. Enforcements that are postponed or suspended are not included in the calculation. The impact of the change in the calculation method varies depending on the type of sanction.

The actual average number of persons sentenced to community sanctions is estimated to have increased by 9 per cent between 2021 and 2022. Between 2022 and 2023, the average continued to rise noticeably (+8%). The upward trend continued in 2024 (+4%), even though the number of new enforced community sanctions declined for the second consecutive year and the number of ended community sanctions started to rise. It was not possible to calculate the number of sanctions completed in 2022 reliably due to, among other things, overlapping data in the old and new offender management system.

In 2024, the average number of persons sentenced to community service was 1 721. The increase was 2 per cent compared with the previous year. For the first time, the proportion of persons in the preparation phase of all sentenced persons fell below 50 per cent, which was a positive indicator of the progress of enforced sentences. The number of ended community service sentences (1 608), which increased by 8 per cent compared with 2023, also suggests that the processes have become more efficient. The number of new enforced community service sentences (1 810) remained at the same level as the previous year. In contrast, the number of requested suitability assessments for community service (3 703) decreased by around 8 per cent.

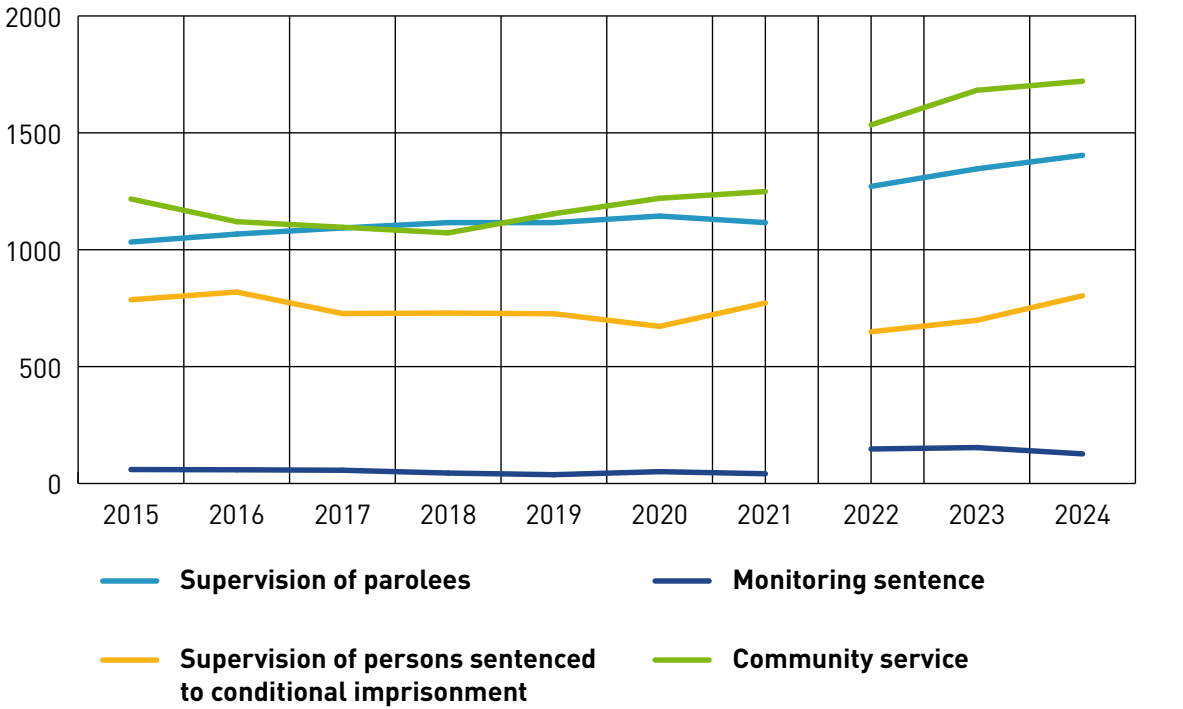
For monitoring sentences, all statistics, except for conversions into imprisonment, showed a downward trend in the past year. The number of persons serving a monitoring sentence at the end of 2024 (84) was a third lower than a year earlier and the number of new monitoring sentences enforced during the year (170) was also exceptionally low. Requests for suitability assessments for monitoring sentence dropped by as much as 22 per cent. Although the proportion of positive statements remained at a normal level (60%), the total number of positive statements (191) fell

to its lowest level in the ten-year follow-up period, which indicates a likely continued decline in the number of persons sentenced to a monitoring sentence in the coming years. The proportion of ended monitoring sentences converted into imprisonment (21%) rose sharply compared with previous years.

The average number of persons sentenced to conditional imprisonment with supervision was 15 per cent higher than in 2023. The increase was entirely due to a rise in the number of supervised young persons in the enforcement phase serving their sentence. The average number of supervised persons sentenced for offences committed after the age of 21 was 32, which stayed at the same level as in the previous year, representing less than 5 per cent of all supervised persons. Juvenile punishment statistics increased across the board, although the total number remained very low. In 2024, the average number of persons serving juvenile punishment was ten nationwide.

In 2024, an average of 1 404 parolees (also known as conditional released prisoners) were subject to supervision daily, which was 4 per cent more than in 2023. Approximately one-quarter (346) of these were in the preparation phase. The average number of parolees released under supervision has remained stable at around 1 050 throughout the 2020s, despite significant yearly fluctuations in the number of parole supervision cases in preparation. In 2024, a total of 805 new supervisions were prepared. This figure has been declining since peaking in 2022.

Figure 7. Average daily number of persons sentenced to community sanctions in 2015–2024



The calculation of the number of persons sentenced to community sanctions changed in 2022 due to the new offender management system. A comparison with the average numbers of the previous years is not possible.

3.2 Background information on persons sentenced to community sanctions

The background information reported in the Statistical Yearbook 2023 has been corrected in this publication as a result of technical improvements in the knowledge base. Most of the corrections concern information on supervised parolees, where significant gaps had previously existed.

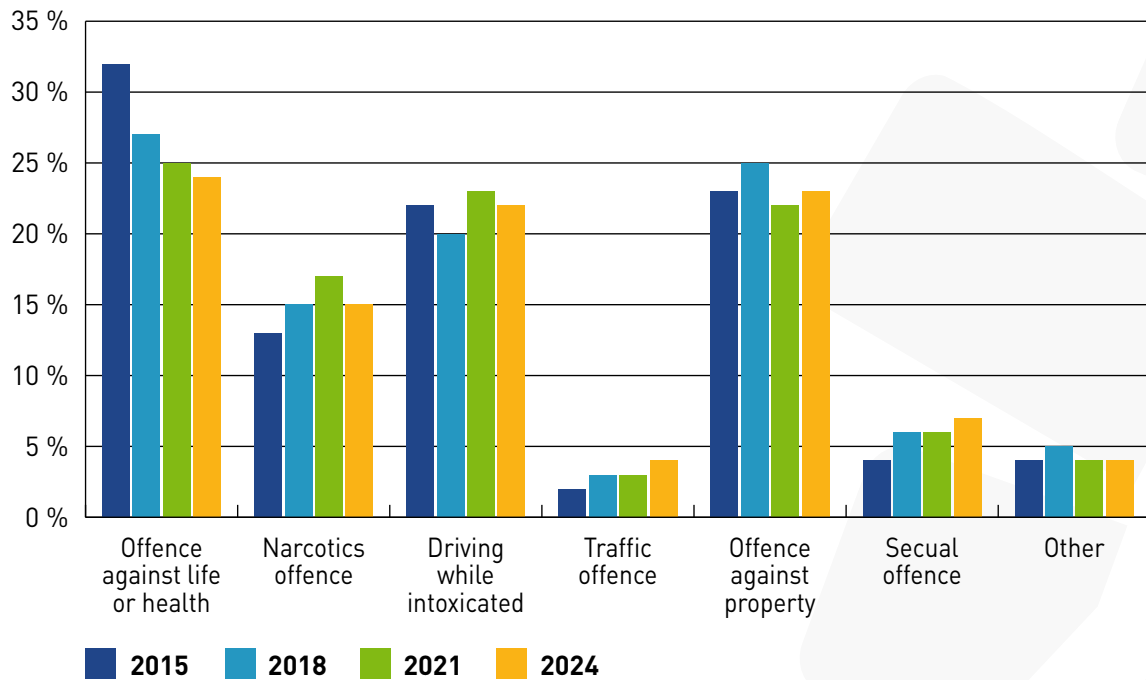
The most common principal offence of persons sentenced to community service was driving while intoxicated. In both the 2023 and 2024 client structure surveys (on 1 May), the proportion of those sentenced for driving while intoxicated was 41 per cent. In 2024, the next most common principal offences were offences against property (19%) and offences against life and health (14%).

Driving while intoxicated was also the most common principal offence among persons serving a monitoring sentence, accounting for 46 per cent in 2024. The proportion of persons sentenced for offences against life and health (14%) had increased compared with the previous year. In earlier years, refusing military service or non-military service – classified under other offences in the statistics – was a common offence leading to a monitoring sentence. However, in the 2024 survey, it was the principal offence for only 11 per cent of the sentenced persons.

Among persons sentenced to conditional imprisonment with supervision, the proportion sentenced for offences against property rose to a third in 2024. Similarly, the proportion sentenced for offences against life and health increased to 27 per cent. Assault was by far the most common offence in this category, accounting for 67 per cent (n = 147). The proportion of those sentenced for narcotics offences (14%) continued to decline and was down by six percentage points compared with 2019.

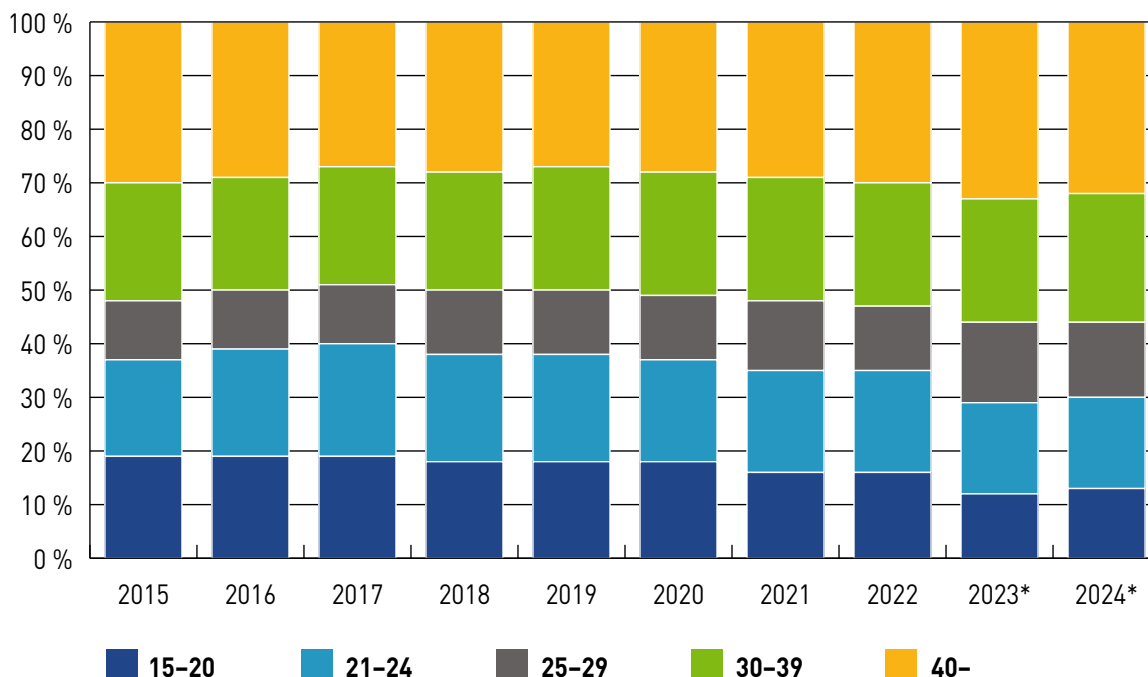
The most common principal offences among supervised parolees were clearly offences against life and health, comprising 35 per cent (n = 453) of supervised parolees in May 2024. The most common offences in this category were aggravated assault (n = 168) and attempted murder (n = 162). The next largest categories were offences against property (26%) and narcotics offences (23%). The proportion of those sentenced for sexual offences rose to 13 per cent over the six-year follow-up period.

Figure 8. Principal offence of persons sentenced to community sanctions on 1 May in 2015, 2018, 2021 and 2024 (%)



There was no significant change in the age distribution of persons sentenced to community sanctions based on the 2024 survey. The combined proportion of persons aged 21 to 49 remained dominant, accounting for over 70 per cent of all persons sentenced to community sanctions. A total of 539 persons sentenced to community sanctions (13%) were under the age of 21. Compared with the previous year, the most notable increase was in the 30–39 age group, which accounted for 24 per cent (n = 947). The proportion of those aged over 50 was 16 per cent.

Figure 9. Age distribution of persons sentenced to community sanctions on 1 May in 2015–2024 (%) vuosina 2015–2024 (%)



From 2023 onwards, age distributions have been calculated based on the total number of persons, meaning that persons serving several different types of sanctions simultaneously are counted only once.

The proportion of women sentenced to community sanctions has remained stable at 11–12 per cent for over a decade. In the 2024 survey, there were 474 (12%) women. The highest proportion of women was among those sentenced to conditional imprisonment with supervision (14%), while the lowest proportions were in monitoring sentence and supervised parole (7–8%).

Only a small proportion of persons serving community sanctions are foreign nationals. In the survey of 1 May 2024, a total of 302 persons (8%) were non-Finnish nationals. They represented 50 different nationalities, but there were five or more sentenced persons from only ten countries. The largest groups were Estonians (n = 69) and Iraqis (n = 47), who together accounted for 38 per cent of all foreign nationals.

3.3 Social situation of people sentenced to community sanctions

A typical socio-economic status of persons sentenced to community sanctions is unemployed. In the 2024 survey, approximately half of persons serving community sanctions were unemployed. The most notable change was in monitoring sentence, where the proportion of unemployed rose from 39 to 51 per cent. The highest proportion of employed persons was among those sentenced to community service (33%), while the highest proportion of students was among those sentenced to conditional imprisonment with supervision (29%).

The housing situation of sentenced persons has improved over the last ten years, though the proportion of those without permanent accommodation remains relatively high. According to the survey of 1 May 2024, 15 per cent (n = 594) of all persons sentenced to community sanctions were homeless or living in temporary accommodation, institutions or dormitories. The highest proportions were among supervised persons sentenced to conditional imprisonment and supervised parolees, both at 26 per cent. There was a clear increase in the number of supervised parolees living in temporary accommodation compared with 2023. The housing situation of those sentenced to community service or monitoring sentence remained at a good level, with over 90 per cent having permanent accommodation.

Tables: Prison services

Table 1. Prisoners in prisons according to gender, prisoner group and prison type in 2024

| | Sentenced prisoners | Fine default prisoners | Remand prisoners | Men | Women | Total |
|-------------------------------------|---------------------|------------------------|------------------|-------|-------|-------|
| At the beginning of the year | | | | | | |
| All prisons | 2 325 | 63 | 778 | 2 910 | 256 | 3 166 |
| Closed prisons | 1 261 | 61 | 778 | 1 943 | 157 | 2 100 |
| Open prisons | 1 064 | 2 | 0 | 967 | 99 | 1 066 |
| At the end of the year | | | | | | |
| All prisons | 2 500 | 32 | 874 | 3 132 | 274 | 3 406 |
| Closed prisons | 1 366 | 31 | 874 | 2 113 | 158 | 2 271 |
| Open prisons | 1 134 | 1 | 0 | 1 019 | 116 | 1 135 |

Table 2. Average daily number of prisoners according to prisoner group in 2015–2024

| Year | Sentenced prisoners | Fine default prisoners | Remand prisoners | Total | Women | Proportion of women of all prisoners |
|-------------|---------------------|------------------------|------------------|-------|-------|--------------------------------------|
| 2015 | 2 419 | 52 | 597 | 3 068 | 231 | 7,5 |
| 2016 | 2 478 | 57 | 585 | 3 120 | 229 | 7,3 |
| 2017 | 2 383 | 55 | 597 | 3 035 | 230 | 7,6 |
| 2018 | 2 304 | 59 | 547 | 2 910 | 218 | 7,5 |
| 2019 | 2 247 | 66 | 639 | 2 952 | 228 | 7,7 |
| 2020 | 2 104 | 63 | 632 | 2 800 | 233 | 8,3 |
| 2021 | 2 187 | 20 | 603 | 2 809 | 214 | 7,6 |
| 2022 | 2 281 | 106 | 669 | 3 056 | 234 | 7,7 |
| 2023 | 2 341 | 99 | 703 | 3 143 | 256 | 8,1 |
| 2024 | 2 499 | 75 | 782 | 3 356 | 284 | 8,5 |

Table 3. Average number of under 21-year-old remand and sentenced prisoners in 2015–2024

| Year | 15–17-year-olds | 18–20-year-olds | Under 21-year-olds in total | All prisoners | Proportion of young prisoners of all prisoners |
|-------------|-----------------|-----------------|-----------------------------|---------------|--|
| 2015 | 8 | 73 | 81 | 3 068 | 2,6 |
| 2016 | 9 | 80 | 89 | 3 120 | 2,9 |
| 2017 | 10 | 85 | 95 | 3 035 | 3,1 |
| 2018 | 5 | 78 | 83 | 2 910 | 2,9 |
| 2019 | 7 | 76 | 83 | 2 952 | 2,8 |
| 2020 | 7 | 79 | 86 | 2 800 | 3,1 |
| 2021 | 11 | 69 | 80 | 2 809 | 2,8 |
| 2022 | 8 | 80 | 88 | 3 056 | 2,9 |
| 2023 | 14 | 95 | 109 | 3 143 | 3,5 |
| 2024 | 16 | 107 | 123 | 3 356 | 3,7 |

Table 4. Persons arriving at prison from freedom according to prisoner group, gender and prison type in 2024

| | Closed prisons | Open prisons | Men | Women | 15-17-year-olds | 18-20-year-olds | over 21-year-olds | Total |
|-------------------------------|----------------|--------------|-------|-------|-----------------|-----------------|-------------------|-------|
| Sentenced prisoners | 1 648 | 446 | 1 882 | 212 | 8 | 29 | 2 057 | 2 094 |
| Fine default prisoners | 1 851 | 31 | 1 498 | 384 | 0 | 25 | 1 857 | 1 882 |
| Remand prisoners | 2 379 | - | 2 129 | 250 | 82 | 305 | 1 992 | 2 379 |
| Total | 5 878 | 477 | 5 509 | 846 | 90 | 359 | 5 906 | 6 355 |

Table 5. Persons arriving at prison from freedom according to prisoner group in 2015–2024

| Year | Sentenced prisoners | | Fine default prisoners | | Remand prisoners | | Total | |
|-------------|---------------------|-------|------------------------|-------|------------------|-------|-------|-------|
| | Total | Women | Total | Women | Total | Women | Total | Women |
| 2015 | 2 453 | 196 | 1 203 | 160 | 2 015 | 194 | 5 671 | 550 |
| 2016 | 2 439 | 214 | 1 344 | 212 | 1 949 | 184 | 5 732 | 610 |
| 2017 | 2 233 | 169 | 1 251 | 200 | 1 917 | 166 | 5 401 | 535 |
| 2018 | 2 325 | 188 | 1 321 | 209 | 1 900 | 188 | 5 546 | 585 |
| 2019 | 2 302 | 186 | 1 472 | 256 | 2 160 | 218 | 5 934 | 660 |
| 2020 | 1 797 | 159 | 1 221 | 230 | 2 260 | 228 | 5 278 | 617 |
| 2021 | 1 904 | 176 | 290 | 60 | 2 100 | 212 | 4 294 | 448 |
| 2022 | 2 041 | 200 | 1 910 | 389 | 2 019 | 207 | 5 970 | 796 |
| 2023 | 1 922 | 193 | 2 347 | 446 | 2 192 | 223 | 6 461 | 862 |
| 2024 | 2 094 | 212 | 1 882 | 250 | 2 379 | 384 | 6 355 | 846 |

Table 6. Released prisoners according to grounds for release, gender and prison type in 2024

| | Closed prisons | Open prisons | Men | Women | Total |
|--|----------------|--------------|-------|-------|-------|
| Released prisoners in total | 4 575 | 1 480 | 5 226 | 829 | 6 055 |
| 1. Sentence served completely | 1 719 | 60 | 1 401 | 378 | 1 779 |
| 2. Pardoned from further serving of sentence | 0 | 0 | 0 | 0 | 0 |
| 3. Released on parole | 1 377 | 1 414 | 2 530 | 261 | 2 791 |
| 4. Released from remand imprisonment | 1 468 | - | 1 280 | 188 | 1 468 |
| - Imposed an intensified travel ban | 70 | - | 57 | 13 | 70 |
| 5. Other grounds | 11 | 6 | 15 | 2 | 17 |
| Dead | 3 | 1 | 4 | 0 | 4 |
| Transferred to another country | 42 | 10 | 51 | 1 | 52 |

Table 7. Released sentenced prisoners according to served prison term, gender and prison type in 2024

| Served sentence term | Closed prisons | Open prisons | Men | Women | Total |
|----------------------------|----------------|--------------|--------------|------------|--------------|
| Under 1 month | 235 | 143 | 334 | 44 | 378 |
| Over 1 month to 2 months | 298 | 187 | 437 | 48 | 485 |
| Over 2 months to 3 months | 138 | 100 | 218 | 20 | 238 |
| Over 3 months to 6 months | 208 | 186 | 349 | 45 | 394 |
| Over 6 months to 12 months | 212 | 270 | 445 | 37 | 482 |
| Over 1 year to 2 years | 164 | 304 | 414 | 54 | 468 |
| Over 2 years | 136 | 233 | 354 | 15 | 369 |
| Total | 1 391 | 1 423 | 2 551 | 263 | 2 814 |

Table 8. Length of conversion sentences for unpaid fines completed in 2024

| Prisoners serving only conversion sentence for unpaid fines | Men | Women | Total |
|---|--------------|------------|--------------|
| At most 10 days | 655 | 154 | 809 |
| 11–30 days | 559 | 166 | 725 |
| 31–90 days | 181 | 58 | 239 |
| Total | 1 395 | 378 | 1 773 |

Table 9. Released prisoners according to prisoner group and gender in 2015–2024

| Year | Sentenced prisoners | | Fine default prisoners | | Remand prisoners | | All in total | |
|-------------|---------------------|-------|------------------------|-------|------------------|-------|--------------|-------|
| | Total | Women | Total | Women | Total | Women | Total | Women |
| 2015 | 3 304 | 278 | 1 167 | 156 | 1 102 | 130 | 5 573 | 564 |
| 2016 | 3 223 | 254 | 1 247 | 192 | 1 061 | 117 | 5 531 | 563 |
| 2017 | 3 198 | 250 | 1 246 | 207 | 1 132 | 114 | 5 576 | 571 |
| 2018 | 3 166 | 247 | 1 259 | 199 | 1 106 | 126 | 5 531 | 572 |
| 2019 | 3 138 | 237 | 1 389 | 249 | 1 280 | 143 | 5 807 | 629 |
| 2020 | 2 757 | 246 | 1 153 | 220 | 1 492 | 171 | 5 402 | 637 |
| 2021 | 2 581 | 219 | 290 | 59 | 1 309 | 173 | 4 180 | 451 |
| 2022 | 2 714 | 252 | 1 666 | 359 | 1 276 | 151 | 5 656 | 762 |
| 2023 | 2 701 | 238 | 2 263 | 455 | 1 339 | 156 | 6 303 | 849 |
| 2024 | 2 814 | 263 | 1 773 | 378 | 1 468 | 188 | 6 055 | 829 |

Table 10. Length of time served in prison by released prisoners in 2015–2024 (%)

| Served sentence term | 2015 | 2016 | 2017 | 2018 | 2019 | 2020 | 2021 | 2022 | 2023 | 2024 |
|----------------------------|-------|-------|-------|-------|-------|-------|-------|-------|-------|-------|
| Under 1 month | 14 | 14 | 13 | 15 | 14 | 13 | 12 | 12 | 12 | 13 |
| Over 1 month to 2 months | 19 | 17 | 17 | 19 | 18 | 16 | 16 | 16 | 17 | 17 |
| Over 2 months to 3 months | 9 | 8 | 9 | 8 | 9 | 9 | 9 | 9 | 9 | 8 |
| Over 3 months to 6 months | 14 | 16 | 15 | 13 | 14 | 12 | 16 | 15 | 16 | 14 |
| Over 6 months to 12 months | 16 | 14 | 15 | 15 | 14 | 15 | 13 | 14 | 16 | 17 |
| Over 1 year to 2 years | 19 | 19 | 21 | 19 | 18 | 22 | 19 | 20 | 18 | 17 |
| Over 2 years to 4 years | 7 | 8 | 9 | 8 | 8 | 9 | 10 | 9 | 9 | 10 |
| Over 4 years | 3 | 4 | 3 | 3 | 3 | 3 | 3 | 3 | 3 | 3 |
| Total | 100 | 100 | 100 | 100 | 100 | 100 | 100 | 100 | 100 | 100 |
| N | 3 304 | 3 223 | 3 198 | 3 166 | 3 138 | 2 757 | 2 581 | 2 714 | 2 701 | 2 814 |

Table 11. Prisoners released on parole in 2015–2024

| | 2015 | 2016 | 2017 | 2018 | 2019 | 2020 | 2021 | 2022 | 2023 | 2024 |
|--|-------|-------|-------|-------|-------|-------|-------|-------|-------|-------|
| Released on parole in total | 3 266 | 3 187 | 3 170 | 3 142 | 3 114 | 2 741 | 2 564 | 2 683 | 2 680 | 2 791 |
| Based on the decision on the sentence term | 1 969 | 3 172 | 3 151 | 3 125 | 3 098 | 2 720 | 2 549 | 2 674 | 2 671 | 2 778 |
| Based on other decision* | 1 297 | 15 | 16 | 17 | 16 | 21 | 15 | 9 | 9 | 13 |
| Placed under supervision | 720 | 759 | 794 | 782 | 817 | 795 | 718 | 706 | 712 | 794 |

* Those released based on other decision in 2015 include 1 281 prisoners released by decision of the prison director/board.

Table 12. Number of life sentence prisoners at the beginning of the year and commenced life imprisonments, released life sentence prisoners and average length of the served sentence during the year in 2015–2025

| Year | Number of life sentence prisoners at the beginning of the year | Commenced life imprisonments during the year | Released life sentence prisoners | Average length of sentences served by released life sentence prisoners (years) |
|------|--|--|----------------------------------|--|
| 2015 | 203 | 15 | 16 | 13,8 |
| 2016 | 202 | 12 | 13 | 14,0 |
| 2017 | 200 | 12 | 15 | 14,6 |
| 2018 | 195 | 9 | 16 | 14,5 |
| 2019 | 187 | 10 | 14 | 14,9 |
| 2020 | 183 | 20 | 19 | 15,3 |
| 2021 | 182 | 19 | 14 | 14,2 |
| 2022 | 185 | 18 | 9 | 14,5 |
| 2023 | 194 | 7 | 7 | 16,8 |
| 2024 | 192 | Under 5 | 11 | 16,1 |
| 2025 | 186 | – | – | – |

Table 13. Probationary liberty under supervision in 2015–2024

| Year | Started | Ended | Cancelled | Cancelled of ended (%) | In probationary liberty on average daily | Average length of probationary liberty (days) |
|------|---------|-------|-----------|------------------------|--|---|
| 2015 | 702 | 657 | 104 | 16 | 209 | 108 |
| 2016 | 690 | 687 | 123 | 18 | 203 | 110 |
| 2017 | 754 | 774 | 125 | 16 | 214 | 104 |
| 2018 | 749 | 754 | 146 | 19 | 207 | 99 |
| 2019 | 854 | 795 | 137 | 17 | 216 | 97 |
| 2020 | 828 | 871 | 154 | 18 | 227 | 97 |
| 2021 | 856 | 819 | 157 | 19 | 213 | 92 |
| 2022 | 756 | 773 | 153 | 20 | 208 | 104 |
| 2023 | 757 | 736 | 143 | 19 | 206 | 104 |
| 2024 | 800 | 789 | 141 | 18 | 224 | 109 |

Table 14. Principal offence of sentenced prisoners on 1 May in 2015–2024 (%)

| All | 2015 | 2016 | 2017 | 2018 | 2019 | 2020 | 2021 | 2022 | 2023 | 2024 |
|--------------------------------|-------|-------|-------|-------|-------|-------|-------|-------|-------|-------|
| Robbery | 7 | 9 | 8 | 8 | 9 | 9 | 8 | 9 | 12 | 13 |
| Theft | 10 | 10 | 10 | 9 | 9 | 7 | 8 | 8 | 6 | 5 |
| Other offence against property | 7 | 8 | 8 | 9 | 8 | 7 | 7 | 6 | 7 | 6 |
| Homicide | 24 | 21 | 21 | 20 | 21 | 23 | 22 | 21 | 21 | 20 |
| Other violent offence | 17 | 17 | 17 | 17 | 16 | 16 | 16 | 16 | 13 | 13 |
| Sexual offence | 5 | 5 | 7 | 6 | 6 | 7 | 7 | 8 | 8 | 9 |
| Narcotics offence | 19 | 19 | 20 | 21 | 21 | 23 | 22 | 22 | 23 | 23 |
| Driving while intoxicated | 8 | 8 | 7 | 8 | 8 | 6 | 9 | 8 | 5 | 4 |
| Other offence | 2 | 2 | 2 | 2 | 3 | 2 | 3 | 3 | 5 | 6 |
| Total | 100 | 100 | 100 | 100 | 100 | 100 | 100 | 100 | 100 | 100 |
| N | 2 513 | 2 498 | 2 423 | 2 365 | 2 260 | 2 089 | 2 215 | 2 362 | 2 346 | 2 508 |

| Women | 2015 | 2016 | 2017 | 2018 | 2019 | 2020 | 2021 | 2022 | 2023 | 2024 |
|--------------------------------|------|------|------|------|------|------|------|------|------|------|
| Robbery | 4 | 4 | 5 | 4 | 7 | 11 | 7 | 7 | 10 | 13 |
| Theft | 7 | 10 | 12 | 9 | 8 | 9 | 9 | 5 | 9 | 6 |
| Other offence against property | 8 | 12 | 12 | 14 | 14 | 14 | 11 | 13 | 17 | 13 |
| Homicide | 33 | 32 | 28 | 26 | 27 | 24 | 26 | 26 | 27 | 29 |
| Other violent offence | 18 | 16 | 17 | 18 | 16 | 16 | 17 | 15 | 12 | 16 |
| Sexual offence | 1 | 1 | 1 | 2 | 1 | 2 | 3 | 2 | 2 | 2 |
| Narcotics offence | 21 | 19 | 20 | 18 | 16 | 17 | 16 | 21 | 13 | 17 |
| Driving while intoxicated | 5 | 4 | 2 | 5 | 9 | 4 | 7 | 6 | 6 | 2 |
| Other offence | 3 | 2 | 3 | 4 | 1 | 2 | 4 | 4 | 5 | 2 |
| Total | 100 | 100 | 100 | 100 | 100 | 100 | 100 | 100 | 100 | 100 |
| N | 181 | 167 | 181 | 174 | 164 | 161 | 167 | 175 | 174 | 205 |

Table 15. Age groups of sentenced prisoners on 1 May in 2015–2024 (%)

| All | 2015 | 2016 | 2017 | 2018 | 2019 | 2020 | 2021 | 2022 | 2023 | 2024 |
|-------|-------|-------|-------|-------|-------|-------|-------|-------|-------|-------|
| 15–20 | 2 | 1 | 2 | 2 | 2 | 2 | 2 | 2 | 2 | 2 |
| 21–24 | 8 | 8 | 8 | 9 | 9 | 9 | 9 | 8 | 8 | 8 |
| 25–29 | 16 | 17 | 17 | 17 | 18 | 18 | 18 | 18 | 17 | 19 |
| 30–39 | 36 | 35 | 35 | 35 | 35 | 35 | 35 | 35 | 35 | 34 |
| 40–49 | 22 | 22 | 23 | 21 | 21 | 21 | 21 | 21 | 23 | 22 |
| 50– | 16 | 16 | 15 | 16 | 15 | 15 | 16 | 15 | 14 | 15 |
| Total | 100 | 100 | 100 | 100 | 100 | 100 | 100 | 100 | 100 | 100 |
| N | 2 513 | 2 498 | 2 423 | 2 365 | 2 260 | 2 089 | 2 215 | 2 362 | 2 346 | 2 508 |

| Women | 2015 | 2016 | 2017 | 2018 | 2019 | 2020 | 2021 | 2022 | 2023 | 2024 |
|-------|------|------|------|------|------|------|------|------|------|------|
| 15–20 | 1 | 2 | 2 | 1 | 2 | 3 | 2 | 0 | 2 | 2 |
| 21–24 | 7 | 10 | 12 | 5 | 9 | 7 | 5 | 5 | 6 | 8 |
| 25–29 | 16 | 14 | 14 | 18 | 18 | 19 | 16 | 14 | 14 | 18 |
| 30–39 | 31 | 33 | 29 | 33 | 31 | 39 | 31 | 39 | 34 | 30 |
| 40–49 | 24 | 20 | 24 | 25 | 23 | 18 | 27 | 22 | 25 | 23 |
| 50– | 20 | 22 | 20 | 17 | 17 | 14 | 20 | 19 | 20 | 19 |
| Total | 100 | 100 | 100 | 100 | 100 | 100 | 100 | 100 | 100 | 100 |
| N | 181 | 167 | 181 | 174 | 164 | 161 | 167 | 175 | 174 | 205 |

Table 16. Calculated length of time served in prison by sentenced prisoners on 1 May in 2015–2024 (%)

| All | 2015 | 2016 | 2017 | 2018 | 2019 | 2020 | 2021 | 2022 | 2023 | 2024 |
|---------------|-------|-------|-------|-------|-------|-------|-------|-------|-------|-------|
| < 3 months | 8 | 7 | 6 | 7 | 8 | 3 | 7 | 8 | 7 | 6 |
| 3 < 6 months | 8 | 9 | 8 | 7 | 8 | 7 | 7 | 10 | 8 | 8 |
| 6 < 12 months | 14 | 14 | 13 | 14 | 13 | 13 | 14 | 17 | 17 | 18 |
| 1 < 2 years | 27 | 27 | 27 | 28 | 27 | 30 | 27 | 30 | 29 | 28 |
| 2 < 4 years | 20 | 20 | 22 | 21 | 21 | 23 | 22 | 19 | 21 | 22 |
| 4 < 8 years | 13 | 13 | 13 | 12 | 12 | 13 | 13 | 8 | 8 | 9 |
| 8 > years | 10 | 10 | 10 | 10 | 10 | 11 | 10 | 9 | 9 | 9 |
| Total | 100 | 100 | 100 | 100 | 100 | 100 | 100 | 100 | 100 | 100 |
| N | 2 466 | 2 456 | 2 385 | 2 324 | 2 213 | 2 043 | 2 153 | 2 294 | 2 295 | 2 472 |

| Women | 2015 | 2016 | 2017 | 2018 | 2019 | 2020 | 2021 | 2022 | 2023 | 2024 |
|---------------|------|------|------|------|------|------|------|------|------|------|
| < 3 months | 7 | 7 | 6 | 8 | 10 | 3 | 9 | 9 | 8 | 7 |
| 3 < 6 months | 10 | 7 | 8 | 6 | 8 | 4 | 7 | 11 | 9 | 11 |
| 6 < 12 months | 12 | 16 | 17 | 15 | 16 | 15 | 16 | 18 | 24 | 19 |
| 1 < 2 years | 28 | 30 | 27 | 29 | 31 | 42 | 34 | 33 | 29 | 31 |
| 2 < 4 years | 18 | 17 | 18 | 21 | 15 | 17 | 14 | 14 | 16 | 19 |
| 4 < 8 years | 16 | 13 | 14 | 12 | 10 | 10 | 12 | 8 | 6 | 5 |
| 8 > years | 8 | 10 | 9 | 9 | 9 | 10 | 9 | 8 | 8 | 8 |
| Total | 100 | 100 | 100 | 100 | 100 | 100 | 100 | 100 | 100 | 100 |
| N | 179 | 166 | 179 | 173 | 160 | 154 | 161 | 169 | 170 | 202 |

* The table excludes prisoners whose sentence term had not yet been calculated or who were at large.

Table 17. Number of sentenced prisoners' previous prison sentences on 1 May in 2015–2024 (%)

| All | 2015 | 2016 | 2017 | 2018 | 2019 | 2020 | 2021 | 2022 | 2023 | 2024 |
|--------------|-------|-------|-------|-------|-------|-------|-------|-------|-------|-------|
| 1st time | 37 | 36 | 38 | 39 | 38 | 42 | 41 | 41 | 43 | 46 |
| 2nd time | 13 | 13 | 14 | 14 | 15 | 14 | 14 | 14 | 13 | 13 |
| 3rd–7th time | 32 | 32 | 31 | 30 | 30 | 28 | 28 | 28 | 27 | 26 |
| 8th– time | 18 | 19 | 18 | 17 | 17 | 16 | 17 | 17 | 17 | 15 |
| Total | 100 | 100 | 100 | 100 | 100 | 100 | 100 | 100 | 100 | 100 |
| N | 2 512 | 2 494 | 2 421 | 2 364 | 2 260 | 2 088 | 2 215 | 2 361 | 2 346 | 2 508 |

| Women | 2015 | 2016 | 2017 | 2018 | 2019 | 2020 | 2021 | 2022 | 2023 | 2024 |
|--------------|------|------|------|------|------|------|------|------|------|------|
| 1st time | 56 | 53 | 54 | 51 | 53 | 62 | 57 | 63 | 56 | 58 |
| 2nd time | 14 | 15 | 13 | 14 | 14 | 14 | 13 | 10 | 11 | 11 |
| 3rd–7th time | 23 | 24 | 20 | 26 | 25 | 18 | 20 | 21 | 24 | 23 |
| 8th– time | 7 | 8 | 13 | 9 | 8 | 6 | 10 | 5 | 9 | 8 |
| Total | 100 | 100 | 100 | 100 | 100 | 100 | 100 | 100 | 100 | 100 |
| N | 181 | 167 | 181 | 174 | 164 | 161 | 167 | 175 | 174 | 205 |

Table 18. Average number of foreign prisoners according to prisoner group and their proportion of all prisoners in 2015–2024

| Year | Foreign prisoners serving a sentence | Foreign remand prisoners | Foreign prisoners in total | All prisoners | Proportion of foreign prisoners of all prisoners |
|------|--------------------------------------|--------------------------|----------------------------|---------------|--|
| 2015 | 277 | 200 | 477 | 3 068 | 15,5 |
| 2016 | 314 | 223 | 537 | 3 120 | 17,2 |
| 2017 | 334 | 206 | 540 | 3 035 | 17,8 |
| 2018 | 295 | 187 | 482 | 2 910 | 16,6 |
| 2019 | 293 | 206 | 499 | 2 952 | 16,9 |
| 2020 | 282 | 193 | 475 | 2 800 | 17,0 |
| 2021 | 288 | 146 | 434 | 2 809 | 15,5 |
| 2022 | 279 | 201 | 480 | 3 056 | 15,7 |
| 2023 | 318 | 242 | 560 | 3 143 | 17,8 |
| 2024 | 374 | 313 | 687 | 3 356 | 20,5 |

Table 19. Principal offence of foreign sentenced prisoners on 1 May in 2015–2024 (%)

| | 2015 | 2016 | 2017 | 2018 | 2019 | 2020 | 2021 | 2022 | 2023 | 2024 |
|---------------------------------------|------|------|------|------|------|------|------|------|------|------|
| Robbery | 5 | 6 | 5 | 7 | 5 | 3 | 4 | 4 | 5 | 6 |
| Theft | 15 | 12 | 7 | 7 | 13 | 8 | 6 | 5 | 8 | 4 |
| Other offence against property | 3 | 3 | 3 | 3 | 2 | 3 | 2 | 3 | 4 | 2 |
| Homicide | 11 | 10 | 10 | 10 | 10 | 10 | 11 | 15 | 10 | 9 |
| Other violent offence | 6 | 7 | 10 | 9 | 9 | 8 | 8 | 7 | 7 | 5 |
| Sexual offence | 10 | 6 | 14 | 9 | 11 | 15 | 14 | 12 | 16 | 20 |
| Narcotics offence | 46 | 50 | 46 | 49 | 44 | 49 | 50 | 48 | 42 | 49 |
| Driving while intoxicated | 1 | 5 | 3 | 4 | 4 | 2 | 4 | 2 | 5 | 1 |
| Other offences | 2 | 3 | 2 | 2 | 1 | 3 | 2 | 3 | 4 | 5 |
| Total | 100 | 100 | 100 | 100 | 100 | 100 | 100 | 100 | 100 | 100 |
| N | 294 | 307 | 324 | 306 | 292 | 279 | 292 | 268 | 308 | 343 |

Table 20. Nationalities of foreign prisoners on 1 May 2024

| | |
|------------------------|-----|
| Prisoners in total | 639 |
| Nationalities in total | 72 |

| Largest nationality groups | |
|-----------------------------------|----|
| Estonia | 83 |
| Iraq | 63 |
| Romania | 42 |
| Albania | 37 |
| Sweden | 36 |
| Lithuania | 33 |
| Netherlands | 26 |
| Latvia | 24 |
| Somalia | 24 |
| Gambia | 20 |
| Russia | 19 |
| Iran | 15 |
| Syria | 13 |
| Afghanistan | 12 |
| Ukraine | 11 |
| Spain | 9 |
| Morocco | 8 |
| Poland | 7 |
| Türkiye | 7 |

| Other nationalities, 150 prisoners in total | | |
|--|------------------------|----------------|
| Algeria | Dem. Rep. of the Congo | Sierra Leone |
| Angola | Greece | Slovakia |
| Australia | Croatia | Sri Lanka |
| Belgium | Liberia | Sudan |
| Bosnia and Herzegovina | Libya | Tanzania |
| Bulgaria | Malaysia | Denmark |
| Egypt | Mexico | Thailand |
| Eritrea | Montenegro | Czechia |
| Philippines | Myanmar | Tunisia |
| Georgia | Niger | Uganda |
| Ghana | Nigeria | Hungary |
| Iceland | Norway | Belarus |
| Israel | Pakistan | Vietnam |
| Italy | Portugal | United Kingdom |
| Yemen | France | United States |
| Cameroon | Rwanda | |
| Canada | Germany | |
| China | Senegal | |
| Colombia | Serbia | |

Table 21. Prison leaves in 2015–2024

| Year | Applied | Granted | | Revoked | | Used | | Complied with conditions | | Violated conditions | |
|-------------|---------|---------|------|---------|-----|--------|------|--------------------------|------|---------------------|-----|
| | N | N | % | N | % | N | % | N | % | N | % |
| 2015 | 16 550 | 12 708 | 76,8 | 405 | 3,2 | 12 303 | 96,8 | 11 832 | 96,2 | 471 | 3,8 |
| 2016 | 17 776 | 13 813 | 77,7 | 465 | 3,4 | 13 348 | 96,6 | 12 857 | 96,3 | 491 | 3,7 |
| 2017 | 17 852 | 13 844 | 77,5 | 464 | 3,4 | 13 380 | 96,6 | 12 926 | 96,6 | 454 | 3,4 |
| 2018 | 17 243 | 13 557 | 78,6 | 390 | 2,9 | 13 167 | 97,1 | 12 701 | 96,5 | 466 | 3,5 |
| 2019 | 16 845 | 13 248 | 78,6 | 481 | 3,6 | 12 767 | 96,4 | 12 349 | 96,7 | 418 | 3,3 |
| 2020 | 11 499 | 8 258 | 71,8 | 477 | 5,8 | 7 781 | 94,2 | 7 503 | 96,4 | 278 | 3,6 |
| 2021 | 8 658 | 5 551 | 64,1 | 361 | 6,5 | 5 190 | 93,5 | 4 988 | 96,1 | 202 | 3,9 |
| 2022 | 16 205 | 12 775 | 78,8 | 841 | 6,6 | 11 934 | 93,4 | 11 654 | 97,7 | 280 | 2,3 |
| 2023 | 19 421 | 16 509 | 85,0 | 1 127 | 6,8 | 15 382 | 93,2 | 15 147 | 98,5 | 235 | 1,5 |
| 2024 | 20 410 | 17 482 | 85,7 | 1 177 | 6,7 | 16 305 | 93,3 | 16 059 | 98,5 | 246 | 1,5 |

Table 22. Escapes and unauthorised leaves in 2015–2024

| Year | Escapes in total | Escapes from closed prisons | Escapes from inside prison walls | Unauthorised leaves from open prisons | Unauthorised leaves from rehabilitation institutions |
|-------------|------------------|-----------------------------|----------------------------------|---------------------------------------|--|
| 2015 | 10 | 8 | 2 | 42 | 29 |
| 2016 | 10 | 9 | 4 | 55 | 9 |
| 2017 | 8 | 7 | 5 | 63 | 10 |
| 2018 | 11 | 5 | 1 | 52 | 8 |
| 2019 | 6 | 3 | 1 | 38 | 7 |
| 2020 | 7 | 5 | 2 | 73 | 8 |
| 2021 | 4 | 4 | 1 | 75 | 18 |
| 2022 | 13 | 11 | 5 | 60 | 22 |
| 2023 | 8 | 4 | 1 | 60 | 15 |
| 2024 | 1 | 1 | 0 | 64 | 15 |

Table 23. Prisoners and prisons in 1985–2024

| Year | Daily average number of prisoners | | | | | Sentenced persons arriving at prison from freedom | | | | | | Released from prisons | Prisons on 31 December | Available prisoner places | |
|------|-----------------------------------|-------|------------------------|-------------------|-------------------|---|------------------------|--------------------|---------------------------|---------------------|--------------------|-----------------------|------------------------|---------------------------|--------------------|
| | Total | Women | Fine default prisoners | Re-mand prisoners | Foreign prisoners | Total | As sentenced prisoners | | As fine default prisoners | As remand prisoners | | | | In all prisons | Closed prisons (%) |
| | | | | | | | Total | Under 21-year-olds | | Total | Under 21-year-olds | | | | |
| 1985 | 4 411 | 137 | 113 | 500 | 15 | 9 307 | 5 277 | 408 | 1 161 | 2 846 | 672 | 9 516 | 18 | 4 693 | 74 |
| 1986 | 4 219 | 126 | 132 | 510 | 11 | 9 216 | 5 010 | 297 | 1 337 | 2 867 | 402 | 9 240 | 18 | 4 738 | 72 |
| 1987 | 4 175 | 127 | 66 | 468 | 12 | 9 467 | 5 392 | 285 | 1 429 | 2 646 | 438 | 9 744 | 19 | 4 716 | 75 |
| 1988 | 3 972 | 125 | 91 | 421 | 11 | 9 379 | 5 096 | 260 | 1 821 | 2 462 | 382 | 9 707 | 21 | 4 700 | 75 |
| 1989 | 3 389 | 112 | 98 | 350 | 11 | 8 648 | 5 237 | 292 | 1 720 | 1 691 | 205 | 9 272 | 21 | 4 739 | 75 |
| 1990 | 3 441 | 109 | 95 | 372 | 20 | 8 831 | 5 349 | 201 | 1 556 | 1 926 | 325 | 8 561 | 21 | 4 214 | 73 |
| 1991 | 3 467 | 110 | 137 | 293 | 28 | 8 874 | 5 411 | 232 | 2 016 | 1 447 | 247 | 9 183 | 22 | 4 210 | 71 |
| 1992 | 3 511 | 110 | 189 | 263 | 43 | 9 851 | 5 769 | 268 | 2 557 | 1 525 | 248 | 9 755 | 23 | 4 220 | 72 |
| 1993 | 3 421 | 119 | 245 | 248 | 48 | 9 435 | 5 055 | 234 | 2 944 | 1 436 | 274 | 9 593 | 24 | 4 286 | 73 |
| 1994 | 3 275 | 122 | 221 | 259 | 57 | 8 711 | 4 424 | 205 | 2 661 | 1 626 | 306 | 8 984 | 25 | 4 102 | 72 |
| 1995 | 3 248 | 133 | 173 | 289 | 73 | 7 755 | 3 910 | 169 | 2 273 | 1 572 | 298 | 7 661 | 24 | 4 095 | 69 |
| 1996 | 3 197 | 149 | 132 | 300 | 94 | 6 594 | 3 254 | 172 | 1 703 | 1 637 | 279 | 7 028 | 24 | 3 907 | 71 |
| 1997 | 2 974 | 144 | 119 | 295 | 116 | 6 201 | 2 937 | 134 | 1 671 | 1 593 | 205 | 6 314 | 24 | 3 827 | 71 |
| 1998 | 2 809 | 140 | 96 | 292 | 130 | 5 803 | 2 982 | 120 | 1 318 | 1 503 | 198 | 5 883 | 23 | 3 508 | 71 |
| 1999 | 2 743 | 126 | 102 | 354 | 138 | 5 838 | 2 858 | 113 | 1 391 | 1 589 | 145 | 5 972 | 23 | 3 494 | 71 |
| 2000 | 2 855 | 144 | 121 | 376 | 173 | 6 561 | 3 312 | 122 | 1 581 | 1 668 | 220 | 6 272 | 22 | 3 357 | 71 |
| 2001 | 3 135 | 159 | 149 | 457 | 248 | 6 832 | 3 248 | 184 | 1 698 | 1 886 | 278 | 6 516 | 22 | 3 399 | 71 |
| 2002 | 3 433 | 204 | 190 | 478 | 293 | 7 451 | 3 452 | 106 | 2 156 | 1 843 | 219 | 7 245 | 22 | 3 437 | 72 |
| 2003 | 3 578 | 205 | 198 | 492 | 291 | 7 654 | 3 520 | 123 | 2 223 | 1 911 | 211 | 7 511 | 21 | 3 286 | 76 |
| 2004 | 3 577 | 206 | 81 | 473 | 284 | 6 575 | 3 863 | 129 | 867 | 1 845 | 189 | 6 322 | 21 | 3 479 | 72 |
| 2005 | 3 888 | 242 | 179 | 519 | 282 | 7 552 | 3 779 | 95 | 1 843 | 1 930 | 178 | 7 063 | 21 | 3 460 | 73 |
| 2006 | 3 778 | 246 | 189 | 463 | 306 | 7 292 | 3 496 | 72 | 2 098 | 1 698 | 155 | 7 672 | 26 | 3 607 | 71 |
| 2007 | 3 551 | 244 | 134 | 506 | 307 | 7 303 | 3 568 | 57 | 1 856 | 1 879 | 177 | 7 352 | 26 | 3 540 | 71 |
| 2008 | 3 526 | 232 | 121 | 559 | 325 | 7 321 | 3 539 | 88 | 1 852 | 1 930 | 224 | 7 196 | 26 | 3 517 | 72 |
| 2009 | 3 492 | 246 | 83 | 569 | 370 | 7 059 | 3 469 | 104 | 1 627 | 1 963 | 180 | 7 246 | 26 | 3 298 | 70 |
| 2010 | 3 291 | 246 | 57 | 599 | 394 | 6 545 | 3 244 | 83 | 1 303 | 1 998 | 186 | 6 506 | 28 | 3 113 | 67 |
| 2011 | 3 262 | 234 | 53 | 598 | 444 | 6 436 | 3 097 | 80 | 1 277 | 2 062 | 200 | 6 358 | 27 | 3 092 | 67 |
| 2012 | 3 236 | 224 | 49 | 626 | 470 | 6 066 | 2 744 | 65 | 1 135 | 2 187 | 215 | 6 073 | 26 | 3 089 | 71 |
| 2013 | 3 175 | 242 | 48 | 578 | 464 | 5 809 | 2 640 | 54 | 1 179 | 1 990 | 187 | 5 851 | 26 | 3 089 | 70 |
| 2014 | 3 097 | 239 | 52 | 619 | 483 | 5 749 | 2 525 | 52 | 1 244 | 1 980 | 198 | 5 700 | 26 | 3 083 | 69 |
| 2015 | 3 086 | 231 | 52 | 597 | 477 | 5 671 | 2 453 | 42 | 1 203 | 2 015 | 206 | 5 573 | 26 | 3 007 | 70 |
| 2016 | 3 120 | 229 | 57 | 585 | 537 | 5 732 | 2 439 | 37 | 1 344 | 1 949 | 200 | 5 531 | 26 | 2 959 | 67 |
| 2017 | 3 035 | 230 | 55 | 597 | 540 | 5 401 | 2 234 | 44 | 1 251 | 1 916 | 190 | 5 576 | 26 | 2 922 | 66 |
| 2018 | 2 910 | 218 | 59 | 547 | 482 | 5 546 | 2 325 | 42 | 1 321 | 1 900 | 164 | 5 531 | 26 | 2 975 | 67 |
| 2019 | 2 952 | 228 | 66 | 639 | 499 | 5 934 | 2 302 | 40 | 1 472 | 2 160 | 206 | 5 807 | 26 | 2 878 | 68 |
| 2020 | 2 800 | 233 | 63 | 632 | 475 | 5 278 | 1 797 | 27 | 1 221 | 2 260 | 231 | 5 402 | 26 | 2 997 | 68 |
| 2021 | 2 809 | 214 | 20 | 603 | 434 | 4 294 | 1 904 | 24 | 290 | 2 100 | 232 | 4 180 | 26 | 3 011 | 67 |
| 2022 | 3 056 | 234 | 106 | 669 | 480 | 5 970 | 2 041 | 22 | 1 910 | 2 019 | 238 | 5 656 | 28 | 2 991 | 67 |
| 2023 | 3 143 | 256 | 99 | 703 | 560 | 6 461 | 1 922 | 35 | 2 347 | 2 192 | 304 | 6 303 | 28 | 2 958 | 67 |
| 2024 | 3 356 | 284 | 75 | 782 | 687 | 6 355 | 2 094 | 37 | 1 882 | 2 379 | 387 | 6 055 | 28 | 2 978 | 67 |

Table 24. Recidivism of sentenced prisoners released in 2010–2019 (%) within a five-year follow-up period according to gender, age and previous prison sentences

| | | 2010 | 2011 | 2012 | 2013 | 2014 | 2015 | 2016 | 2017 | 2018 | 2019 |
|----------------------------------|---------|-------|-------|-------|-------|-------|-------|-------|-------|-------|-------|
| Gender | Total | 59 | 61 | 58 | 58 | 57 | 58 | 59 | 58 | 60 | 62 |
| | Men | 60 | 61 | 59 | 59 | 58 | 60 | 60 | 59 | 61 | 62 |
| | Women | 50 | 51 | 46 | 46 | 44 | 44 | 50 | 42 | 45 | 51 |
| Age when released | 15 < 21 | 78 | 87 | 74 | 75 | 91 | 79 | 83 | 72 | 74 | 74 |
| | 21 < 30 | 70 | 68 | 67 | 70 | 66 | 66 | 70 | 65 | 68 | 69 |
| | 30 < 40 | 65 | 65 | 60 | 62 | 59 | 63 | 64 | 63 | 65 | 64 |
| | 40 < 50 | 50 | 55 | 51 | 50 | 51 | 52 | 53 | 53 | 53 | 60 |
| | 50– | 35 | 39 | 38 | 34 | 35 | 39 | 33 | 34 | 38 | 38 |
| Previous prison sentences | 1 | 41 | 41 | 36 | 38 | 36 | 37 | 42 | 37 | 41 | 43 |
| | 2 | 60 | 59 | 57 | 60 | 55 | 56 | 52 | 56 | 54 | 59 |
| | 3–5 | 66 | 68 | 69 | 68 | 65 | 66 | 67 | 63 | 71 | 67 |
| | 6– | 73 | 75 | 74 | 73 | 75 | 78 | 74 | 75 | 76 | 80 |
| Total N | | 3 915 | 3 659 | 3 456 | 3 304 | 3 098 | 3 035 | 2 952 | 2 890 | 2 857 | 2 820 |

Tables: Probation services

Table 25. Average daily number of persons sentenced to community sanctions in 2015–2024

| Year | Community service | Monitoring sentence | Supervision of persons sentenced to conditional imprisonment* | Juvenile punishment | Supervision of parolees | Supervision of persons sentenced to combination sentence | Persons in total |
|---------------|-------------------|---------------------|---|---------------------|-------------------------|--|------------------|
| 2015 | 1 217 | 48 | 786 | 9 | 1 033 | | 3 093 |
| 2016 | 1 120 | 47 | 819 | 9 | 1 067 | | 3 061 |
| 2017 | 1 096 | 45 | 727 | 7 | 1 093 | | 2 967 |
| 2018 | 1 072 | 33 | 729 | 8 | 1 116 | | 2 959 |
| 2019 | 1 154 | 26 | 726 | 9 | 1 116 | | 3 031 |
| 2020 | 1 220 | 39 | 674 | 6 | 1 144 | | 3 083 |
| 2021 | 1 249 | 30 | 772 | 8 | 1 116 | | 3 174 |
| 2022** | 1 534 | 136 | 649 | 7 | 1 271 | Under 5 | 3 502 |
| 2023** | 1 682 | 142 | 698 | 7 | 1 346 | Under 5 | 3 785 |
| 2024** | 1 721 | 115 | 803 | 10 | 1 404 | 6 | 3 941 |

* As from 2020, this also includes supervised adults sentenced to conditional imprisonment.

** The calculation of the number of persons sentenced to community sanctions changed in 2022 due to the new offender management system. A comparison with the average numbers of the previous years is not possible.

Table 26. Enforcement of community service in 2015–2024

| | 2015 | 2016 | 2017 | 2018 | 2019 | 2020 | 2021 | 2022* | 2023 | 2024 |
|--|---------|---------|---------|---------|---------|---------|---------|---------|---------|---------|
| Requested suitability assessments | 4 037 | 3 858 | 3 850 | 4 057 | 3 872 | 4 190 | 4 228 | 3 868 | 4 008 | 3 703 |
| Prepared suitability assessments** | 3 136 | 2 990 | 3 067 | 3 095 | 2 912 | 3 184 | 3 203 | 2 763 | 2 936 | 2 896 |
| Given positive statements | 2 744 | 2 602 | 2 600 | 2 574 | 2 436 | 2 679 | 2 672 | 2 316 | 2 414 | 2 395 |
| Given positive statements (%) | 88 | 87 | 85 | 83 | 84 | 84 | 83 | 84 | 82 | 83 |
| New enforced community service sentences | 2 329 | 2 037 | 1 938 | 2 009 | 1 930 | 1 752 | 2 004 | 1 888 | 1 829 | 1 810 |
| Completed community service sentences | 1 832 | 1 643 | 1 489 | 1 436 | 1 445 | 1 166 | 1 437 | | 1 293 | 1 392 |
| Ended community service sentences*** | 2 210 | 2 062 | 1 849 | 1 828 | 1 774 | 1 503 | 1 744 | | 1 486 | 1 608 |
| Converted into imprisonment or monitoring sentence by a District Court's decision | 326 | 359 | 321 | 343 | 280 | 294 | 246 | | 190 | 214 |
| Proportion of ended sentences (%) | 15 | 17 | 17 | 19 | 16 | 20 | 14 | | 13 | 13 |
| Served community service hours in a year | 173 658 | 151 396 | 140 408 | 136 865 | 143 786 | 118 345 | 145 650 | 131 214 | 125 948 | 138 993 |
| Persons sentenced to community service (31 December) | 1 127 | 1 021 | 1 015 | 1 039 | 1 128 | 1 175 | 1 177 | 1 639 | 1 677 | 1 652 |
| Daily average of persons sentenced to community service | 1 217 | 1 120 | 1 096 | 1 072 | 1 154 | 1 220 | 1 249 | 1 534 | 1 682 | 1 721 |

* The statistics of 2022 are incomplete because of the offender management system reform of the Prison and Probation Service.

** Does not include cases where it was not possible to prepare a statement.

*** Ended community service sentences include completed and converted sentences, deaths, and other (the court has regarded the enforcement to be completed).

Table 27. Enforcement of monitoring sentence in 2015–2024

| | 2015 | 2016 | 2017 | 2018 | 2019 | 2020 | 2021 | 2022* | 2023 | 2024 |
|---|------|------|------|------|------|------|------|-------|------|------|
| Requested suitability assessments | 828 | 704 | 654 | 700 | 735 | 620 | 620 | 623 | 606 | 474 |
| Prepared suitability assessments** | 573 | 538 | 465 | 497 | 538 | 464 | 472 | 416 | 377 | 319 |
| Given positive statements | 340 | 328 | 299 | 297 | 325 | 271 | 294 | 271 | 234 | 191 |
| Given positive statements (%) | 59 | 61 | 64 | 60 | 60 | 58 | 62 | 65 | 62 | 60 |
| New enforced monitoring sentences | 270 | 261 | 246 | 207 | 197 | 188 | 190 | 235 | 215 | 170 |
| Ended monitoring sentences | 221 | 241 | 224 | 177 | 157 | 164 | 149 | | 181 | 152 |
| Converted into imprisonment by a District Court's decision | 21 | 33 | 26 | 25 | 23 | 20 | 13 | | 23 | 32 |
| Proportion of ended sentences (%) | 10 | 14 | 12 | 14 | 15 | 12 | 9 | | 13 | 21 |
| Average length of served time (days) | 63 | 60 | 62 | 55 | 47 | 50 | 65 | | 66 | 53 |
| Persons sentenced to monitoring sentence (31 December) | 51 | 34 | 32 | 26 | 22 | 37 | 30 | 154 | 127 | 84 |
| Daily average of persons sentenced to monitoring sentence | 48 | 47 | 45 | 33 | 26 | 39 | 30 | 136 | 142 | 115 |

* The statistics of 2022 are incomplete because of the offender management system reform of the Prison and Probation Service.

** Does not include cases where it was not possible to prepare a statement.

Table 28. Supervision of persons sentenced to conditional imprisonment in 2015–2024

| | 2015 | 2016 | 2017 | 2018 | 2019 | 2020* | 2021* | 2022** | 2023 | 2024 |
|---|-------|-------|-------|-------|-------|-------|-------|--------|------|-------|
| New supervisions | 772 | 707 | 665 | 700 | 626 | 684 | 750 | 738 | 774 | 697 |
| Under supervision in total in a year | 1 452 | 1 241 | 1 133 | 1 302 | 1 266 | 1 266 | 1 361 | | 928 | 1 170 |
| Supervision cancelled | 23 | 27 | 26 | 21 | 14 | 7 | 16 | | 12 | 36 |
| Supervision period ended | 624 | 699 | 647 | 532 | 605 | 592 | 564 | | 541 | 494 |
| Probationary period ended | 40 | 23 | 23 | 26 | 23 | 16 | 17 | | 0 | 0 |
| Under supervision on 31 December | 795 | 762 | 715 | 743 | 687 | 714 | 796 | 655 | 762 | 813 |
| Daily average of supervised persons | 786 | 819 | 727 | 729 | 726 | 674 | 772 | 649 | 698 | 803 |

* As from 2020, this also includes supervised adults sentenced to conditional imprisonment.

** The statistics of 2022 are incomplete because of the offender management system reform of the Prison and Probation Service.

Table 29. Enforcement of juvenile punishment in 2015–2024

| | 2015 | 2016 | 2017 | 2018 | 2019 | 2020 | 2021 | 2022* | 2023 | 2024 |
|---|------|------|------|------|------|------|------|-------|------|------|
| New enforced juvenile punishments | 8 | 6 | 5 | 11 | 7 | 7 | 10 | 11 | 8 | 13 |
| Completed juvenile punishments | 6 | 5 | 7 | 4 | 6 | 5 | 5 | | 5 | 8 |
| Daily average of persons serving juvenile punishment | 9 | 9 | 7 | 8 | 9 | 6 | 8 | 7 | 7 | 10 |

* The statistics of 2022 are incomplete because of the offender management system reform of the Prison and Probation Service.

Table 30. Supervision of parolees in 2015–2024

| | 2015 | 2016 | 2017 | 2018 | 2019 | 2020 | 2021 | 2022* | 2023 | 2024 |
|---|-------|-------|-------|-------|-------|-------|-------|-------|-------|-------|
| New supervisions in a year | 733 | 762 | 750 | 785 | 817 | 774 | 711 | 940 | 864 | 805 |
| Under supervision in total in a year | 1 710 | 1 558 | 1 588 | 1 761 | 1 796 | 1 796 | 1 754 | | 1 444 | 1 526 |
| Supervision cancelled | 122 | 119 | 117 | 97 | 124 | 92 | 101 | | 149 | 161 |
| Probationary period ended | 597 | 583 | 591 | 635 | 653 | 636 | 648 | | 571 | 551 |
| Under supervision on 31 December | 1 023 | 1 043 | 1 097 | 1 108 | 1 114 | 1 136 | 1 054 | 1 259 | 1 392 | 1 432 |
| Daily average of supervised persons | 1 033 | 1 067 | 1 093 | 1 116 | 1 116 | 1 144 | 1 116 | 1 271 | 1 346 | 1 404 |

* The statistics of 2022 are incomplete because of the offender management system reform of the Prison and Probation Service.

Table 31. Principal offence of persons sentenced to community sanctions according to sanction on 1 May in 2019–2024 (%)

| | 2019 | | | | | | 2020 | | | | | |
|--------------------------------|-------|-----|-----|-----|-------|-------|-------|-----|------|-----|-------|-------|
| | CS | MS | SCS | JP | SP | Total | CS | MS | SCS* | JP | SP | Total |
| Offence against life or health | 16 | 15 | 21 | .. | 40 | 26 | 13 | .. | 21 | .. | 39 | 24 |
| Narcotics offence | 10 | 15 | 20 | 0 | 20 | 16 | 13 | .. | 21 | .. | 21 | 18 |
| Driving while intoxicated | 39 | 48 | 13 | 0 | 2 | 19 | 41 | 35 | 12 | 0 | 1 | 20 |
| Traffic offence | 4 | .. | 5 | .. | 1 | 3 | 4 | .. | 6 | 0 | 1 | 3 |
| Offence against property | 23 | 15 | 31 | 73 | 24 | 25 | 22 | .. | 33 | .. | 24 | 25 |
| Sexual offence | 4 | 0 | 4 | 0 | 10 | 6 | 2 | 0 | 4 | 0 | 11 | 6 |
| Other | 5 | .. | 7 | 0 | 3 | 5 | 4 | 27 | 4 | .. | 2 | 4 |
| Yhteensä | 100 | 100 | 100 | 100 | 100 | 100 | 100 | 100 | 100 | 100 | 100 | 100 |
| N | 1 203 | 33 | 754 | 11 | 1 111 | 3 112 | 1 293 | 26 | 695 | 7 | 1 147 | 3 168 |

| | 2021 | | | | | | 2022 | | | | | |
|--------------------------------|-------|-----|------|-----|-------|-------|-------|-----|------|-----|-------|-------|
| | CS | MS | SCS* | JP | SP | Total | CS | MS | SCS* | JP | SP | Total |
| Offence against life or health | 14 | 21 | 22 | .. | 39 | 25 | 13 | .. | 23 | .. | 40 | 25 |
| Narcotics offence | 12 | .. | 21 | 0 | 21 | 17 | 13 | .. | 18 | .. | 22 | 17 |
| Driving while intoxicated | 46 | 27 | 16 | .. | 2 | 23 | 43 | 30 | 15 | .. | 2 | 22 |
| Traffic offence | 4 | .. | 6 | 0 | 1 | 3 | 5 | .. | 6 | 0 | 0 | 4 |
| Offence against property | 17 | .. | 27 | .. | 24 | 22 | 19 | 11 | 27 | 58 | 22 | 22 |
| Sexual offence | 3 | 0 | 2 | 0 | 12 | 6 | 3 | 0 | 4 | 0 | 11 | 6 |
| Other | 5 | 27 | 5 | 0 | 2 | 4 | 4 | 46 | 7 | .. | 2 | 5 |
| Total | 100 | 100 | 100 | 100 | 100 | 100 | 100 | 100 | 100 | 100 | 100 | 100 |
| N** | 1 323 | 33 | 761 | 5 | 1 140 | 3 262 | 1 195 | 54 | 722 | 12 | 1 018 | 3 001 |

| | 2023 | | | | | | 2024 | | | | | |
|--------------------------------|-------|-----|------|-----|-----|----------|-------|-----|------|-----|-------|----------|
| | CS | MS | SCS* | JP | SP | Total*** | CS | MS | SCS* | JP | SP | Total*** |
| Offence against life or health | 14 | 10 | 25 | .. | 35 | 22 | 14 | 14 | 27 | 0 | 35 | 24 |
| Narcotics offence | 11 | 9 | 16 | .. | 24 | 15 | 11 | 4 | 14 | .. | 23 | 15 |
| Driving while intoxicated | 41 | 51 | 11 | 0 | 1 | 25 | 41 | 46 | 10 | 0 | 1 | 22 |
| Traffic offence | 6 | 7 | 7 | 0 | 1 | 5 | 5 | 8 | 7 | 0 | 1 | 4 |
| Offence against property | 20 | 9 | 32 | 67 | 24 | 23 | 19 | 10 | 33 | .. | 26 | 23 |
| Sexual offence | 4 | 0 | 3 | 0 | 13 | 6 | 5 | 0 | 4 | 0 | 13 | 7 |
| Other | 4 | 14 | 6 | 0 | 3 | 5 | 4 | 18 | 4 | 0 | 2 | 4 |
| Total | 100 | 100 | 100 | 100 | 100 | 100 | 100 | 100 | 100 | 100 | 100 | 100 |
| N** | 1 707 | 135 | 651 | 9 | 920 | 3 349 | 1 780 | 120 | 807 | 8 | 1 306 | 3 916 |

* Includes supervision of adults sentenced to conditional imprisonment.

** Excludes sentenced persons who lack information on their principal offence.

*** From 2023 onwards, community sanctions in total is the number of persons sentenced to community sanctions, meaning that persons serving several different types of sanctions simultaneously are counted only once.

SCS = Supervision of conditionally sentenced persons

SP = Supervision of parolees

CS = Community service

JP = Juvenile punishment

MS = Monitoring sentence

.. = This figure cannot be included due the small number of persons.

Table 32. Age distribution of persons sentenced to community sanctions according to sanction on 1 May in 2015–2024 (%)

| | 15–17 | 18–20 | 21–24 | 25–29 | 30–39 | 40–49 | 50– | Total | N |
|--|-------|-------|-------|-------|-------|-------|-----|-------|-------|
| Community service | | | | | | | | | |
| 2015 | 0 | 3 | 15 | 15 | 29 | 21 | 19 | 100 | 1 229 |
| 2016 | 0 | 3 | 17 | 16 | 29 | 19 | 17 | 100 | 1 178 |
| 2017 | 0 | 2 | 13 | 19 | 28 | 18 | 19 | 100 | 1 121 |
| 2018 | 0 | 3 | 13 | 18 | 31 | 17 | 18 | 100 | 1 087 |
| 2019 | 0 | 3 | 10 | 18 | 31 | 20 | 18 | 100 | 1 203 |
| 2020 | 0 | 2 | 10 | 19 | 30 | 19 | 19 | 100 | 1 293 |
| 2021 | 0 | 2 | 11 | 15 | 29 | 20 | 23 | 100 | 1 323 |
| 2022 | 0 | 2 | 12 | 16 | 28 | 22 | 21 | 100 | 1 195 |
| 2023 | 0 | 2 | 10 | 17 | 27 | 22 | 22 | 100 | 1 719 |
| 2024 | 0 | 2 | 11 | 15 | 29 | 20 | 23 | 100 | 1 785 |
| Monitoring sentence | | | | | | | | | |
| 2015 | 0 | 13 | 25 | 17 | 21 | 10 | 15 | 100 | 48 |
| 2016 | 0 | .. | 29 | 25 | 15 | 21 | .. | 100 | 48 |
| 2017 | 0 | .. | .. | 20 | 25 | 18 | 20 | 100 | 44 |
| 2018 | 0 | .. | .. | 24 | 16 | 16 | 19 | 100 | 37 |
| 2019 | 0 | .. | .. | .. | 39 | 27 | .. | 100 | 33 |
| 2020 | 0 | .. | 19 | .. | 19 | 27 | .. | 100 | 26 |
| 2021 | 0 | .. | .. | 15 | 30 | 18 | 15 | 100 | 33 |
| 2022 | 0 | .. | 24 | 20 | 19 | 26 | .. | 100 | 54 |
| 2023 | 0 | .. | .. | 22 | 23 | 22 | 25 | 100 | 139 |
| 2024 | 0 | .. | .. | 22 | 26 | 25 | 19 | 100 | 124 |
| Supervision of persons sentenced to conditional imprisonment* | | | | | | | | | |
| 2015 | 7 | 57 | 35 | 1 | 0 | 0 | 0 | 100 | 800 |
| 2016 | 9 | 54 | 36 | 0 | 0 | 0 | 0 | 100 | 846 |
| 2017 | 9 | 52 | 39 | 0 | 0 | 0 | 0 | 100 | 748 |
| 2018 | 9 | 52 | 39 | 1 | 0 | 0 | 0 | 100 | 739 |
| 2019 | 7 | 53 | 40 | 0 | 0 | 0 | 0 | 100 | 754 |
| 2020 | 7 | 55 | 37 | 0 | 0 | 0 | 0 | 100 | 695 |
| 2021 | 8 | 52 | 39 | 1 | 0 | 0 | 1 | 100 | 761 |
| 2022 | 8 | 50 | 38 | 1 | 1 | 0 | 1 | 100 | 722 |
| 2023 | 11 | 44 | 41 | 2 | 1 | 1 | 1 | 100 | 684 |
| 2024 | 12 | 44 | 39 | 2 | 2 | 0 | 1 | 100 | 807 |

* As from 2020, this also includes supervised adults sentenced to conditional imprisonment.

.. = This figure cannot be included due the small number of persons.

| | 15-17 | 18-20 | 21-24 | 25-29 | 30-39 | 40-49 | 50- | Total | N |
|--------------------------------|-------|-------|-------|-------|-------|-------|-----|-------|-------|
| Juvenile punishment | | | | | | | | | |
| 2015 | .. | 82 | .. | 0 | 0 | 0 | 0 | 100 | 11 |
| 2016 | .. | 78 | .. | 0 | 0 | 0 | 0 | 100 | 9 |
| 2017 | .. | .. | 0 | 0 | 0 | 0 | 0 | 100 | 8 |
| 2018 | .. | 67 | .. | 0 | 0 | 0 | 0 | 100 | 9 |
| 2019 | .. | 73 | .. | 0 | 0 | 0 | 0 | 100 | 11 |
| 2020 | .. | .. | 0 | 0 | 0 | 0 | 0 | 100 | 7 |
| 2021 | .. | .. | 0 | 0 | 0 | 0 | 0 | 100 | 5 |
| 2022 | 58 | .. | .. | 0 | 0 | 0 | 0 | 100 | 12 |
| 2023 | .. | .. | .. | 0 | 0 | 0 | 0 | 100 | 9 |
| 2024 | .. | .. | 0 | 0 | 0 | 0 | 0 | 100 | 8 |
| Supervision of parolees | | | | | | | | | |
| 2015 | 0 | 4 | 14 | 13 | 30 | 22 | 17 | 100 | 1 067 |
| 2016 | 0 | 4 | 15 | 13 | 30 | 21 | 17 | 100 | 1 094 |
| 2017 | 0 | 4 | 14 | 14 | 30 | 19 | 19 | 100 | 1 095 |
| 2018 | 0 | 3 | 16 | 14 | 30 | 20 | 17 | 100 | 1 106 |
| 2019 | 0 | 4 | 16 | 15 | 29 | 19 | 16 | 100 | 1 111 |
| 2020 | 0 | 3 | 17 | 15 | 30 | 18 | 17 | 100 | 1 147 |
| 2021 | 0 | 3 | 16 | 16 | 29 | 19 | 16 | 100 | 1 140 |
| 2022 | 0 | 3 | 17 | 19 | 27 | 19 | 15 | 100 | 1 018 |
| 2023 | 0 | 5 | 16 | 19 | 28 | 17 | 15 | 100 | 1 342 |
| 2024 | 0 | 5 | 16 | 17 | 29 | 19 | 14 | 100 | 1 401 |

* As from 2020, this also includes supervised adults sentenced to conditional imprisonment.

.. = This figure cannot be included due the small number of persons.

Table 33. Persons sentenced to community sanctions according to gender on 1 May in 2015–2024 (%)

| | 2015 | 2016 | 2017 | 2018 | 2019 | 2020 | 2021 | 2022 | 2023 | 2024 |
|--|-------|-------|-------|-------|-------|-------|-------|-------|-------|-------|
| Community service | | | | | | | | | | |
| Men | 1 081 | 1 017 | 969 | 950 | 1 063 | 1 147 | 1 149 | 1 036 | 1 452 | 1 539 |
| Women | 148 | 161 | 152 | 137 | 140 | 146 | 174 | 159 | 267 | 246 |
| Total | 1 229 | 1 178 | 1 121 | 1 087 | 1 203 | 1 293 | 1 323 | 1 195 | 1 719 | 1 785 |
| Monitoring sentence | | | | | | | | | | |
| Total | 48 | 48 | 40 | 37 | 33 | 26 | 33 | 54 | 139 | 124 |
| Supervision of persons sentenced to conditional imprisonment* | | | | | | | | | | |
| Men | 716 | 737 | 652 | 649 | 664 | 611 | 665 | 643 | 594 | 693 |
| Women | 84 | 109 | 96 | 90 | 90 | 84 | 96 | 79 | 90 | 114 |
| Total | 800 | 846 | 748 | 739 | 754 | 695 | 761 | 722 | 684 | 807 |
| Juvenile punishment | | | | | | | | | | |
| Total | 11 | 9 | 8 | 9 | 11 | 7 | 5 | 12 | 9 | 8 |
| Supervision of parolees | | | | | | | | | | |
| Men | 961 | 1 001 | 1 007 | 1 007 | 1 011 | 1 045 | 1 028 | 941 | 1 255 | 1 286 |
| Women | 106 | 93 | 88 | 99 | 100 | 102 | 112 | 77 | 87 | 115 |
| Total | 1 067 | 1 094 | 1 095 | 1 106 | 1 111 | 1 147 | 1 140 | 1 018 | 1 342 | 1 401 |
| Community sanctions in total** | | | | | | | | | | |
| Men | 2 811 | 2 809 | 2 672 | 2 647 | 2 776 | 2 832 | 2 877 | 2 679 | 3 356 | 3 541 |
| Women | 344 | 366 | 340 | 331 | 336 | 336 | 385 | 322 | 453 | 474 |
| Total | 3 155 | 3 175 | 3 012 | 2 978 | 3 112 | 3 168 | 3 262 | 3 001 | 3 809 | 4 015 |
| Women % | 10,9 | 11,5 | 11,3 | 11,1 | 10,8 | 10,6 | 11,8 | 10,7 | 11,9 | 11,8 |

* As from 2020, includes both young persons and adults sentenced to conditional imprisonment with supervision.

** From 2023 onwards, community sanctions in total is the number of persons sentenced to community sanctions, meaning that persons serving several different types of sanctions simultaneously are counted only once.

Table 34. Socio-economic background of persons serving community service on 1 May in 2015–2024 (%)

| | 2015 | 2016 | 2017 | 2018 | 2019 | 2020 | 2021 | 2022 | 2023 | 2024 |
|--------------------------------|-------|-------|------|------|------|-------|-------|-------|-------|-------|
| INCOME | | | | | | | | | | |
| Student | 6 | 7 | 8 | 6 | 6 | 7 | 6 | 7 | 6 | 7 |
| Employed | 23 | 26 | 27 | 31 | 31 | 29 | 27 | 34 | 36 | 33 |
| Unemployed | 58 | 57 | 56 | 54 | 53 | 54 | 56 | 48 | 47 | 47 |
| In military service | 0 | 0 | 0 | 0 | 0 | 0 | 0 | 0 | 0 | 0 |
| Pensioner | 11 | 9 | 8 | 8 | 9 | 10 | 11 | 11 | 8 | 9 |
| Other | 1 | 1 | 1 | 1 | 1 | 1 | 0 | 0 | 3 | 4 |
| Total | 99 | 100 | 100 | 100 | 100 | 100 | 100 | 100 | 100 | 100 |
| N* | 1 117 | 1 062 | 860 | 811 | 865 | 1 036 | 1 034 | 1 104 | 1 574 | 1 644 |
| HOUSING SITUATION | | | | | | | | | | |
| Permanent accommodation | 89 | 86 | 85 | 86 | 86 | 86 | 88 | 88 | 92 | 90 |
| Dormitory | 1 | 1 | 0 | 1 | 1 | 1 | 1 | 1 | 1 | 1 |
| Temporary accommodation | 6 | 8 | 10 | 9 | 9 | 9 | 8 | 7 | 6 | 8 |
| In prison | 1 | 1 | 1 | 1 | 1 | 1 | 0 | 1 | 1 | 1 |
| Homeless | 3 | 4 | 4 | 3 | 4 | 4 | 3 | 3 | 0 | 0 |
| Total | 100 | 100 | 100 | 100 | 100 | 100 | 100 | 100 | 100 | 100 |
| N* | 1 121 | 1 069 | 866 | 816 | 866 | 1 035 | 1 034 | 1 102 | 1 559 | 1 651 |

* Excludes sentenced persons who lack the survey data.

Table 35. Socio-economic background of persons serving monitoring sentence on 1 May in 2015–2024 (%)

| | 2015 | 2016 | 2017 | 2018 | 2019 | 2020 | 2021 | 2022 | 2023 | 2024 |
|--------------------------------|------|------|------|------|------|------|------|------|------|------|
| INCOME | | | | | | | | | | |
| Student | 15 | 13 | .. | .. | 15 | .. | 15 | 15 | 6 | 9 |
| Employed | 23 | 27 | 27 | 35 | 39 | 31 | 21 | 43 | 34 | 26 |
| Unemployed | 42 | 50 | 52 | 49 | 33 | 38 | 55 | 30 | 39 | 51 |
| In military service | 0 | 0 | 0 | 0 | 0 | 0 | 0 | 0 | 0 | 0 |
| Pensioner | 10 | .. | .. | .. | .. | .. | .. | .. | 16 | 9 |
| Other | 10 | .. | .. | .. | .. | 0 | .. | .. | 6 | 5 |
| Total | 100 | 100 | 100 | 100 | 100 | 100 | 100 | 100 | 100 | 100 |
| N* | 48 | 48 | 44 | 37 | 33 | 26 | 33 | 54 | 124 | 112 |
| HOUSING SITUATION | | | | | | | | | | |
| Permanent accommodation | 94 | 94 | 95 | 95 | 94 | 96 | 91 | 93 | 95 | 93 |
| Dormitory | .. | .. | .. | 0 | 0 | 0 | 0 | 0 | .. | 0 |
| Temporary accommodation | 0 | .. | .. | .. | .. | .. | .. | .. | .. | .. |
| In prison | .. | .. | 0 | .. | .. | .. | .. | .. | .. | .. |
| Homeless | 0 | 0 | 0 | 0 | 0 | 0 | 0 | 0 | 0 | 0 |
| Total | 100 | 100 | 100 | 100 | 100 | 100 | 100 | 100 | 100 | 100 |
| N* | 48 | 48 | 44 | 37 | 32 | 26 | 33 | 54 | 119 | 113 |

* Excludes sentenced persons who lack the survey data.

.. = This figure cannot be included due the small number of persons.

Table 36. Socio-economic background of supervised persons sentenced to conditional imprisonment on 1 May in 2015–2024 (%)

| | 2015 | 2016 | 2017 | 2018 | 2019 | 2020* | 2021* | 2022* | 2023* | 2024* |
|--------------------------------|------|------|------|------|------|-------|-------|-------|-------|-------|
| INCOME | | | | | | | | | | |
| Student | 28 | 28 | 27 | 23 | 25 | 24 | 25 | 23 | 28 | 29 |
| Employed | 12 | 12 | 12 | 13 | 15 | 13 | 10 | 13 | 13 | 13 |
| Unemployed | 54 | 49 | 53 | 58 | 54 | 58 | 57 | 56 | 50 | 49 |
| In military service | 1 | 1 | 0 | 0 | 1 | 0 | 1 | 1 | 0 | 0 |
| Pensioner | 2 | 4 | 1 | 1 | 1 | 1 | 3 | 3 | 1 | 1 |
| Other | 4 | 6 | 7 | 4 | 4 | 4 | 4 | 5 | 8 | 8 |
| Total | 101 | 100 | 100 | 99 | 100 | 100 | 100 | 100 | 100 | 100 |
| N** | 661 | 729 | 646 | 583 | 549 | 535 | 559 | 593 | 624 | 736 |
| HOUSING SITUATION | | | | | | | | | | |
| Permanent accommodation | 82 | 79 | 78 | 76 | 77 | 81 | 77 | 75 | 71 | 75 |
| Dormitory | 1 | 1 | 1 | 1 | 1 | 0 | 1 | 1 | 1 | 2 |
| Temporary accommodation | 7 | 7 | 8 | 8 | 8 | 6 | 9 | 8 | 15 | 11 |
| In prison | 4 | 7 | 8 | 7 | 6 | 5 | 6 | 8 | 12 | 13 |
| Homeless | 6 | 6 | 5 | 8 | 8 | 7 | 8 | 9 | 0 | 0 |
| Total | 100 | 100 | 100 | 100 | 100 | 100 | 100 | 100 | 100 | 100 |
| N** | 669 | 739 | 648 | 591 | 557 | 549 | 575 | 608 | 624 | 746 |

* As from 2020, this also includes supervised adults sentenced to conditional imprisonment.

** Excludes sentenced persons who lack the survey data.

Table 37. Socio-economic background of supervised parolees on 1 May in 2015–2024 (%)

| | 2015 | 2016 | 2017 | 2018 | 2019 | 2020 | 2021 | 2022 | 2023 | 2024 |
|--------------------------------|-------|-------|-------|-------|------|-------|-------|------|------|------|
| INCOME | | | | | | | | | | |
| Student | 9 | 11 | 11 | 11 | 10 | 11 | 14 | 15 | 17 | 16 |
| Employed | 24 | 25 | 23 | 24 | 26 | 26 | 22 | 25 | 23 | 22 |
| Unemployed | 56 | 53 | 54 | 54 | 53 | 51 | 54 | 51 | 45 | 48 |
| In military service | 0 | 0 | 0 | 0 | 0 | 0 | 0 | 0 | 0 | 0 |
| Pensioner | 10 | 10 | 11 | 11 | 9 | 10 | 9 | 9 | 8 | 6 |
| Other | 0 | 1 | 1 | 1 | 1 | 1 | 1 | 0 | 7 | 7 |
| Total | 99 | 100 | 100 | 101 | 100 | 100 | 100 | 100 | 100 | 100 |
| N* | 983 | 1 000 | 985 | 1 012 | 991 | 1 047 | 1 014 | 958 | 710 | 971 |
| HOUSING SITUATION | | | | | | | | | | |
| Permanent accommodation | 74 | 77 | 77 | 77 | 74 | 77 | 77 | 79 | 80 | 73 |
| Dormitory | 2 | 2 | 2 | 1 | 1 | 1 | 1 | 2 | 2 | 2 |
| Temporary accommodation | 15 | 11 | 10 | 11 | 14 | 12 | 11 | 11 | 13 | 19 |
| In prison | 1 | 2 | 2 | 2 | 2 | 1 | 2 | 1 | 4 | 5 |
| Homeless | 8 | 8 | 10 | 9 | 10 | 9 | 9 | 8 | 0 | 0 |
| Total | 100 | 100 | 100 | 100 | 100 | 100 | 100 | 100 | 100 | 100 |
| N* | 1 002 | 1 006 | 1 007 | 1 016 | 992 | 1 057 | 1 025 | 963 | 705 | 946 |

* Excludes sentenced persons who lack the survey data.



Prison and Probation Service of Finland
Opastinsilta 12 C, 00520 Helsinki

Tel. +358 29 56 88500

kirjaamo.rise@om.fi

www.rikosseuraamus.fi/en

ISSN 2736-8432 (Online publication)